

## Recombinant Human ADH1B Protein, GST-tagged

Cat. No. ADH1B-345H Lot. No. (See product label)

### SPECIFICATION

<b>Product Overview</b>	Human ADH1B full-length ORF ( AAH33009.1, 1 a.a. - 375 a.a.) recombinant protein with GST-tag at N-terminal.
<b>Species</b>	Human
<b>Source</b>	Wheat Germ
<b>Description</b>	<p>The protein encoded by this gene is a member of the alcohol dehydrogenase family. Members of this enzyme family metabolize a wide variety of substrates, including ethanol, retinol, other aliphatic alcohols, hydroxysteroids, and lipid peroxidation products. This encoded protein, consisting of several homo- and heterodimers of alpha, beta, and gamma subunits, exhibits high activity for ethanol oxidation and plays a major role in ethanol catabolism. Three genes encoding alpha, beta and gamma subunits are tandemly organized in a genomic segment as a gene cluster. Two transcript variants encoding different isoforms have been found for this gene. [provided by RefSeq, Nov 2013]</p>
<b>Molecular Mass</b>	66.99 kDa
<b>AA Sequence</b>	<p>MSTAGKVIKCKAAVLWEVKKPFSIEDVEVAPPKAYEVRIKMOVAVGICRTDDHVVSGN            LVTPLPVILGHEAAGIVESVGEVTTVKPGDKVIPLFTPQCCKRVCKNPESNYCLKN            DLGNPRGTLQDGTRRFTCRGKPIHHFLGTSTFSQYTVVDENAVAKIDAASPLEKVCLI            GCGFSTGYGSAVNVAKVTPGSTCAVFLGGVGLSAVMGCKAAGAARIIVDINKDK            FAKAKELGATECINPQDYKKPIQEVVKEMTDGGVDFSFEVIGRLDTMMASLLCCHEA</p>

 Tel: 1-631-559-9269 1-516-512-3133

 Email: [info@creative-biomart.com](mailto:info@creative-biomart.com)  Fax: 1-631-938-8127

 45-1 Ramsey Road, Shirley, NY 11967, USA

CGTSVIVGVPPASQNLNINPMLLLTGRTWKGAVYGGFKSKEGIPKLVADFMKKFSL  
DALITHVLPFEKINEGFDLLHSGKSIRTVLTF

<b>Applications</b>	Enzyme-linked Immunoabsorbent Assay Western Blot (Recombinant protein) Antibody Production Protein Array
<b>Notes</b>	Best use within three months from the date of receipt of this protein.
<b>Storage</b>	Store at -80 centigrade. Aliquot to avoid repeated freezing and thawing.
<b>Storage Buffer</b>	50 mM Tris-HCl, 10 mM reduced Glutathione, pH=8.0 in the elution buffer.

## GENE INFORMATION

<b>Gene Name</b>	ADH1B alcohol dehydrogenase 1B (class I), beta polypeptide [ Homo sapiens ]
<b>Official Symbol</b>	ADH1B
<b>Synonyms</b>	ADH1B; alcohol dehydrogenase 1B (class I), beta polypeptide; ADH2; alcohol dehydrogenase 1B; ADH, beta subunit; aldehyde reductase; alcohol dehydrogenase subunit beta; alcohol dehydrogenase 2 (class I), beta polypeptide;
<b>Gene ID</b>	125
<b>mRNA Refseq</b>	NM_000668
<b>Protein Refseq</b>	NP_000659
<b>MIM</b>	103720

 Tel: 1-631-559-9269 1-516-512-3133

 Email: [info@creative-biomart.com](mailto:info@creative-biomart.com)  Fax: 1-631-938-8127

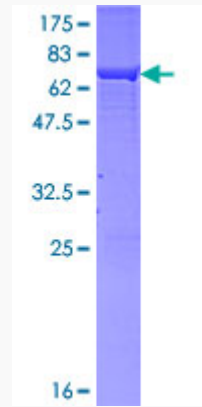
 45-1 Ramsey Road, Shirley, NY 11967, USA

UniProt ID

P00325

Quality Control

Testing:



12.5% SDS-PAGE Stained with Coomassie Blue.

 Tel: 1-631-559-9269 1-516-512-3133

 Email: [info@creative-biomart.com](mailto:info@creative-biomart.com)  Fax: 1-631-938-8127

 45-1 Ramsey Road, Shirley, NY 11967, USA