

Recombinant Human ADH1B Protein, Myc/DDK-tagged, C13 and N15-labeled

Cat. No. ADH1B-6574H **Lot. No.** (See product label)

SPECIFICATION

Product Overview	ADH1B MS Standard C13 and N15-labeled recombinant protein (NP_000659) with a C-terminal MYC/DDK tag, was expressed in HEK293 cells.
Species	Human
Source	HEK293
Description	The protein encoded by this gene is a member of the alcohol dehydrogenase family. Members of this enzyme family metabolize a wide variety of substrates, including ethanol, retinol, other aliphatic alcohols, hydroxysteroids, and lipid peroxidation products. This encoded protein, consisting of several homo- and heterodimers of alpha, beta, and gamma subunits, exhibits high activity for ethanol oxidation and plays a major role in ethanol catabolism. Three genes encoding alpha, beta and gamma subunits are tandemly organized in a genomic segment as a gene cluster. Two transcript variants encoding different isoforms have been found for this gene.
Molecular Mass	39.9 kDa
AA Sequence	MSTAGKVIKCKAAVLWEVKKPFSIEDVEVAPPKAYEVRIKMVAVGICRTDDHVVSGN LVTPLPVILGHEAAGIVESVGEVTTVKPGDKVIPLFTPQCCKRVCKNPESNYCLKN DLGNPRGTLQDGTRRFTCRGKPIHHFLGTSTFSQYTVVDENAVAKIDAASPLEKVCLI GCGFSTGYGSAVNVAKVTPGSTCAVFGLGGVGLSAVMGCKAAGAARIIVDINKDK FAKAKELGATECINPQDYKKPIQEVVKEMTDGGVDFSFEVIGRLDTMMASLLCCHEA

 Tel: 1-631-559-9269 1-516-512-3133

 Email: info@creative-biomart.com  Fax: 1-631-938-8127

 45-1 Ramsey Road, Shirley, NY 11967, USA

CGTSVIVGVPPASQNLNINPMLLLTGRTWKGAVYGGFKSKEGIPKLVADFMKKFSL
DALITHVLPFEKINEGFDLLHSGKSIRTVLTFTTRTRPLEQKLISEEDLAANDILDYKDDD
DKV

Purity > 80% as determined by SDS-PAGE and Coomassie blue staining

Stability Stable for 3 months from receipt of products under proper storage and handling conditions.

Storage Store at -80 centigrade. Avoid repeated freeze-thaw cycles.

Concentration 50 µg/mL as determined by BCA

Storage Buffer 100 mM glycine, 25 mM Tris-HCl, pH 7.3.

GENE INFORMATION

Gene Name ADH1B alcohol dehydrogenase 1B (class I), beta polypeptide [Homo sapiens (human)]

Official Symbol ADH1B

Synonyms ADH1B; alcohol dehydrogenase 1B (class I), beta polypeptide; ADH2; alcohol dehydrogenase 1B; ADH, beta subunit; aldehyde reductase; alcohol dehydrogenase subunit beta; alcohol dehydrogenase 2 (class I), beta polypeptide;

Gene ID 125

mRNA Refseq NM_000668

Protein Refseq NP_000659

 Tel: 1-631-559-9269 1-516-512-3133

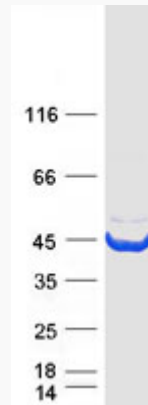
 Email: info@creative-biomart.com  Fax: 1-631-938-8127

 45-1 Ramsey Road, Shirley, NY 11967, USA

MIM 103720

UniProt ID P00325

SDS-PAGE



 Tel: 1-631-559-9269 1-516-512-3133

 Email: info@creative-biomart.com  Fax: 1-631-938-8127

 45-1 Ramsey Road, Shirley, NY 11967, USA