

Recombinant Human ADH1C Protein, MYC/DDK-tagged, C13 and N15-labeled

Cat. No. ADH1C-100H **Lot. No.** (See product label)

SPECIFICATION

Product Overview	ADH1C MS Standard C13 and N15-labeled recombinant protein (NP_000660) with a C-terminal MYC/DDK tag, was expressed in HEK293 cells.
Species	Human
Source	HEK293
Description	This gene encodes class I alcohol dehydrogenase, gamma subunit, which is a member of the alcohol dehydrogenase family. Members of this enzyme family metabolize a wide variety of substrates, including ethanol, retinol, other aliphatic alcohols, hydroxysteroids, and lipid peroxidation products. Class I alcohol dehydrogenase, consisting of several homo- and heterodimers of alpha, beta, and gamma subunits, exhibits high activity for ethanol oxidation to acetaldehyde, thus playing a major role in ethanol catabolism. Three genes encoding alpha, beta and gamma subunits are tandemly organized in a genomic segment as a gene cluster. An association between ADH1C polymorphism and alcohol dependence has not been established.
Molecular Mass	39.8 kDa
AA Sequence	MSTAGKVIKCKAAVLWELKKPFSIEEVEVAPPKAHEVRIKMVAAGICRSDEHVVSGN LVTPLPVILGHEAAGIVESVGEVTTVKPGDKVIPLFTPQC GKCRICKNPESNYCLKN DLGNPRGTLQDGTRRFTCSGKPIHHFVGVSTFSQYTVVDENAVAKIDAASPLEKVCL

 Tel: 1-631-559-9269 1-516-512-3133

 Email: info@creative-biomart.com  Fax: 1-631-938-8127

 45-1 Ramsey Road, Shirley, NY 11967, USA

IGCGFSTGYGSAVKVAKVTPGSTCAVFGLGGVGLSVVMGCKAAGAARIIVDINKDK
 FAKAKELGATECINPQDYKKPIQEVLKEMTDGGVDFSFEVIGQLDTMMASLLCCEA
 CGTSVIVGVPPDSQNLSINPMLLLTGRTWKGAIFGGFKSKESVPKLVADFMAKKFSL
 DALITNVLPFEKINEGFDLLRSGKSIRTVLTFTRTRPLEQKLISEEDLAANDILDYKDDD
 DKV

Purity > 80% as determined by SDS-PAGE and Coomassie blue staining

Stability Stable for 3 months from receipt of products under proper storage and handling conditions.

Storage Store at -80 centigrade. Avoid repeated freeze-thaw cycles.

Concentration 50 µg/mL as determined by BCA

Storage Buffer 100 mM glycine, 25 mM Tris-HCl, pH 7.3.

GENE INFORMATION

Gene Name ADH1C alcohol dehydrogenase 1C (class I), gamma polypeptide [Homo sapiens (human)]

Official Symbol ADH1C

Synonyms ADH1C; alcohol dehydrogenase 1C (class I), gamma polypeptide; ADH3; alcohol dehydrogenase 1C; ADH, gamma subunit; alcohol dehydrogenase 3 (class I), gamma polypeptide; aldehyde reductase; EC 1.1.1.1

Gene ID 126

mRNA Refseq NM_000669

 Tel: 1-631-559-9269 1-516-512-3133

 Email: info@creative-biomart.com  Fax: 1-631-938-8127

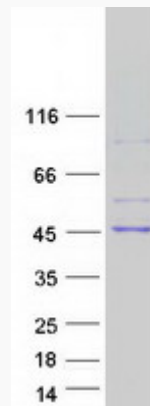
 45-1 Ramsey Road, Shirley, NY 11967, USA

Protein Refseq NP_000660

MIM 103730

UniProt ID P00326

SDS-PAGE



 Tel: 1-631-559-9269 1-516-512-3133

 Email: info@creative-biomart.com  Fax: 1-631-938-8127

 45-1 Ramsey Road, Shirley, NY 11967, USA