

Recombinant Human ADH1C Protein, GST-tagged

Cat. No. ADH1C-346H Lot. No. (See product label)

SPECIFICATION

Product Overview	Human ADH1C full-length ORF (NP_000660.1, 1 a.a. - 375 a.a.) recombinant protein with GST-tag at N-terminal.
Species	Human
Source	Wheat Germ
Description	This gene encodes class I alcohol dehydrogenase, gamma subunit, which is a member of the alcohol dehydrogenase family. Members of this enzyme family metabolize a wide variety of substrates, including ethanol, retinol, other aliphatic alcohols, hydroxysteroids, and lipid peroxidation products. Class I alcohol dehydrogenase, consisting of several homo- and heterodimers of alpha, beta, and gamma subunits, exhibits high activity for ethanol oxidation and plays a major role in ethanol catabolism. Three genes encoding alpha, beta and gamma subunits are tandemly organized in a genomic segment as a gene cluster. [provided by RefSeq, Jul 2008]
Molecular Mass	66.3 kDa
AA Sequence	MSTAGKVIKCKAAVLWELKKPFSIEEVEVAPPKAHEVRIKMVAAGICRSDEHVVSGN LVTPLPVILGHEAAGIVESVGEVTTVKPGDKVIPLFTPQCCKRICKNPESNYCLKN DLGNPRGTLQDGTRRFTCSGKPIHHFVGVSTFSQYTVVDENAVAKIDAASPLEKVCL IGCGFSTGYGSAVKVAKVTPGSTCAVFLGGVGLSVVMGCKAAGAARIIVDINKDK FAKAKELGATECINPQDYKKPIQEVVKEMTDGGVDFSFEVIGRLDTMMASLLCCHEA

 Tel: 1-631-559-9269 1-516-512-3133

 Email: info@creative-biomart.com  Fax: 1-631-938-8127

 45-1 Ramsey Road, Shirley, NY 11967, USA

CGTSVIVGVPPDSQNLSINPMLLLTGRTWKGAIFGGFKSKESVPKLVADFMAKKFSL
DALITNILPFEKINEGFDLLRSGKSIRTVLTF

Applications	Enzyme-linked Immunoabsorbent Assay Western Blot (Recombinant protein) Antibody Production Protein Array
Notes	Best use within three months from the date of receipt of this protein.
Storage	Store at -80 centigrade. Aliquot to avoid repeated freezing and thawing.
Storage Buffer	50 mM Tris-HCl, 10 mM reduced Glutathione, pH=8.0 in the elution buffer.

GENE INFORMATION

Gene Name	ADH1C alcohol dehydrogenase 1C (class I), gamma polypeptide [Homo sapiens]
Official Symbol	ADH1C
Synonyms	ADH1C; alcohol dehydrogenase 1C (class I), gamma polypeptide; ADH3; alcohol dehydrogenase 1C; ADH, gamma subunit; aldehyde reductase; alcohol dehydrogenase subunit gamma; alcohol dehydrogenase 3 (class I), gamma polypeptide;
Gene ID	126
mRNA Refseq	NM_000669
Protein Refseq	NP_000660

 Tel: 1-631-559-9269 1-516-512-3133

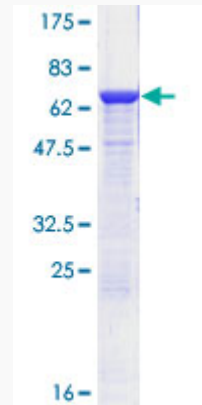
 Email: info@creative-biomart.com  Fax: 1-631-938-8127

 45-1 Ramsey Road, Shirley, NY 11967, USA

MIM 103730

UniProt ID P00326

**Quality Control
Testing:**



12.5% SDS-PAGE Stained with Coomassie Blue.

 Tel: 1-631-559-9269 1-516-512-3133

 Email: info@creative-biomart.com  Fax: 1-631-938-8127

 45-1 Ramsey Road, Shirley, NY 11967, USA