

Recombinant Human ADH6 Protein, Myc/DDK-tagged, C13 and N15-labeled

Cat. No. ADH6-3807H **Lot. No.** (See product label)

SPECIFICATION

Product Overview	ADH6 MS Standard C13 and N15-labeled recombinant protein (NP_001095940) with a C-terminal MYC/DDK tag, was expressed in HEK293 cells.
Species	Human
Source	HEK293
Description	This gene encodes class V alcohol dehydrogenase, which is a member of the alcohol dehydrogenase family. Members of this family metabolize a wide variety of substrates, including ethanol, retinol, other aliphatic alcohols, hydroxysteroids, and lipid peroxidation products. This gene is expressed in the stomach as well as in the liver, and it contains a glucocorticoid response element upstream of its 5' UTR, which is a steroid hormone receptor binding site. Alternatively spliced transcript variants encoding different isoforms have been found for this gene.
Molecular Mass	39.6 kDa
AA Sequence	MSTTGQVIRCKAAILWKPGAPFSIEEVEVAPPKAKEVRIKVVATGLCGTEMKVLGSK HLDLLYPTILGHEGAGIVESIGEGVSTVKPGDKVITLFLPQCGETSCLNSEGNFCIQF KQSKTQLMSDGTSRFTCKGKSIYHFGNTSTFCEYTVIKEISVAKIDAVAPLEKVCLISC GFSTGFGAINTAKVTPGSTCAVFLGGVGLSVVMGCKAAGAARIIGVDVNKEKFKK AQELGATECLNPQDLKKPIQEVLFDMTDAGIDFCFEAIGNLDVLAALASCNESYGV CVVVGVLPAVQLKISGQLFFSGRSLKGSVFGGWKSRQHIPKLVADYMAEKLNLDP

 Tel: 1-631-559-9269 1-516-512-3133

 Email: info@creative-biomart.com  Fax: 1-631-938-8127

 45-1 Ramsey Road, Shirley, NY 11967, USA

ITHTLNLDKINEAVELMKTGKRCIRCLLLTRTRPLEQKLISEEDLAANDILDYKDDDDKV

Purity > 80% as determined by SDS-PAGE and Coomassie blue staining

Stability Stable for 3 months from receipt of products under proper storage and handling conditions.

Storage Store at -80 centigrade. Avoid repeated freeze-thaw cycles.

Concentration 50 µg/mL as determined by BCA

Storage Buffer 100 mM glycine, 25 mM Tris-HCl, pH 7.3.

GENE INFORMATION

Gene Name ADH6 alcohol dehydrogenase 6 (class V) [Homo sapiens (human)]

Official Symbol ADH6

Synonyms ADH6; alcohol dehydrogenase 6 (class V); alcohol dehydrogenase 6; ADH 5; aldehyde reductase; ADH-5;

Gene ID 130

mRNA Refseq NM_001102470

Protein Refseq NP_001095940

MIM 103735

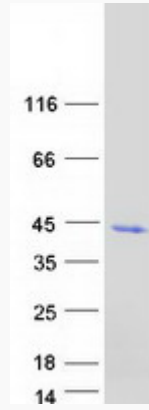
UniProt ID P28332

 Tel: 1-631-559-9269 1-516-512-3133

 Email: info@creative-biomart.com  Fax: 1-631-938-8127

 45-1 Ramsey Road, Shirley, NY 11967, USA

SDS-PAGE



 Tel: 1-631-559-9269 1-516-512-3133

 Email: info@creative-biomart.com  Fax: 1-631-938-8127

 45-1 Ramsey Road, Shirley, NY 11967, USA