

## Recombinant Human ADHFE1 Protein, GST-tagged

**Cat. No.** ADHFE1-355H    **Lot. No.** (See product label)

### SPECIFICATION

<b>Product Overview</b>	Human ADHFE1 full-length ORF ( NP_653251.1, 1 a.a. - 419 a.a.) recombinant protein with GST-tag at N-terminal.
<b>Species</b>	Human
<b>Source</b>	Wheat Germ
<b>Description</b>	The ADHFE1 gene encodes hydroxyacid-oxoacid transhydrogenase (EC 1.1.99.24), which is responsible for the oxidation of 4-hydroxybutyrate in mammalian tissues (Kardon et al., 2006 [PubMed 16616524]).[supplied by OMIM, Mar 2008]
<b>Molecular Mass</b>	71.6 kDa
<b>AA Sequence</b>	MAVSNIRYGAAVTKEVGM DLKNMGAKNVCLMTDKNLSKLPPVQVAMDSL VKNGIPF TVYDNVRVEPTDSSFMEAIEFAQKGAFDAYVAVGGGSTMDTCKAANLYASSPHSDF LDYVSAPIGK GKPVSVPLKPLIAVPTTSGTGSETTGVAIFDYEHLKVKIGITSRAIKPTL GLIDPLHTLHMPARVVANSGFDVLCHALESYTTLPHYHLRSPCPSNPITRPAYQGSNPI SDIWAIHALRIVAKY LKRAVRNPDDLEARSHMHLASAFAGIGFGNAGVHLCHGMSYP ISGLVKMYKAKDYNVDHPLVPHGLSVVLTSPAVFTFTAQMFPERHLEMAEILGADTR TARIQDAGLV LADTLRKFLFDLDVDDGLAAVGYSKADIPALVKGTLPQERVTKLAPRP QSEEDLAALFEASMKLY
<b>Applications</b>	Enzyme-linked Immunoabsorbent Assay Western Blot (Recombinant protein) Antibody Production

 Tel: 1-631-559-9269    1-516-512-3133

 Email: [info@creative-biomart.com](mailto:info@creative-biomart.com)     Fax: 1-631-938-8127

 45-1 Ramsey Road, Shirley, NY 11967, USA

Protein Array

<b>Notes</b>	Best use within three months from the date of receipt of this protein.
<b>Storage</b>	Store at -80 centigrade. Aliquot to avoid repeated freezing and thawing.
<b>Storage Buffer</b>	50 mM Tris-HCl, 10 mM reduced Glutathione, pH=8.0 in the elution buffer.

## GENE INFORMATION

<b>Gene Name</b>	ADHFE1 alcohol dehydrogenase, iron containing, 1 [ Homo sapiens ]
<b>Official Symbol</b>	ADHFE1
<b>Synonyms</b>	ADHFE1; alcohol dehydrogenase, iron containing, 1; hydroxyacid-oxoacid transhydrogenase, mitochondrial; ADHFe1; FLJ32430; alcohol dehydrogenase 8; Fe-containing alcohol dehydrogenase 1; alcohol dehydrogenase iron-containing protein 1; HOT; ADH8; HMFT2263; MGC48605;
<b>Gene ID</b>	137872
<b>mRNA Refseq</b>	NM_144650
<b>Protein Refseq</b>	NP_653251
<b>MIM</b>	611083
<b>UniProt ID</b>	Q8IWW8

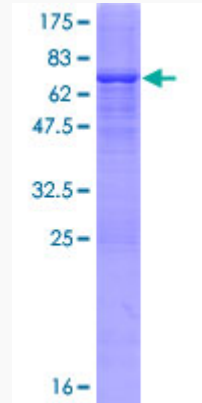
 Tel: 1-631-559-9269 1-516-512-3133

 Email: [info@creative-biomart.com](mailto:info@creative-biomart.com)  Fax: 1-631-938-8127

 45-1 Ramsey Road, Shirley, NY 11967, USA

**Quality Control**

**Testing:**



12.5% SDS-PAGE Stained with Coomassie Blue.

 Tel: 1-631-559-9269 1-516-512-3133

 Email: [info@creative-biomart.com](mailto:info@creative-biomart.com)  Fax: 1-631-938-8127

 45-1 Ramsey Road, Shirley, NY 11967, USA