

Recombinant Human ADHFE1 protein, His-tagged

Cat. No. ADHFE1-9422H Lot. No. (See product label)

SPECIFICATION

Product Overview	Recombinant Human ADHFE1 protein(1-255 aa), fused with N-terminal His tag, was expressed in E. coli.
Species	Human
Source	E.coli
ProteinLength	1-255 aa
Tag	N-His
Form	The purified protein was Lyophilized from sterile PBS (58mM Na ₂ HPO ₄ , 17mM NaH ₂ PO ₄ , 68mM NaCl, pH7.4). 5 % trehalose and 5 % mannitol are added as protectant before lyophilization.
Purity	90%, by SDS-PAGE with Coomassie Brilliant Blue staining.
Storage	Short-term storage: Store at 2-8°C for (1-2 weeks). Long-term storage: Aliquot and store at -20°C to -80°C for up to 3 months, reconstitution with sterile water and addition of an equal volume of glycerol. Avoid repeat freeze-thaw cycles.
Reconstitution	Reconstitute at 0.25 µg/µl in 200 µl sterile water for short-term storage. After reconstitution with sterile water, if glycerol has no effect on subsequent experiments, it is recommended to add an equal volume of glycerol for long-term storage.

 Tel: 1-631-559-9269 1-516-512-3133

 Email: info@creative-biomart.com  Fax: 1-631-938-8127

 45-1 Ramsey Road, Shirley, NY 11967, USA

AA Sequence

MAVSNIRYGAAVTKEVGM DLK NMGAKNVCLMTDKNLSKLPPVQVAMDSL VKNGIPF
 TVYDNRVREPTDSSFME AIEFAQKGAFDAYVAVGGGSTMDTCKAANLYASSPHSDF
 LDYVSAPIGK GKPVSVPLKPLIAVPTTSGTGSETTGVAIFDYEHLKVKIGITSRAIKPTL
 GLIDPLHTLHMPARVVANS GFV LCHALESYTTLPYHLRSPCPSNPITRPAYQGSNPI
 SDIWAIHALRIVAKYLKRAVNSTDK

GENE INFORMATION

Gene Name

ADHFE1 alcohol dehydrogenase, iron containing, 1 [Homo sapiens]

Official Symbol

ADHFE1

Synonyms

ADHFE1; alcohol dehydrogenase, iron containing, 1; hydroxyacid-oxoacid transhydrogenase, mitochondrial; ADHFe1; FLJ32430; alcohol dehydrogenase 8; Fe-containing alcohol dehydrogenase 1; alcohol dehydrogenase iron-containing protein 1; HOT; ADH8; HMFT2263; MGC48605;

Gene ID

137872

mRNA Refseq

NM_144650

Protein Refseq

NP_653251

MIM

611083

UniProt ID

Q8IWW8

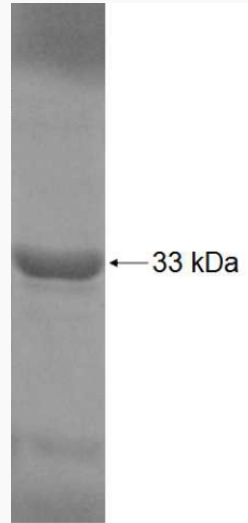
 Tel: 1-631-559-9269 1-516-512-3133

 Email: info@creative-biomart.com  Fax: 1-631-938-8127

 45-1 Ramsey Road, Shirley, NY 11967, USA



SDS-PAGE



Tel: 1-631-559-9269 1-516-512-3133

Email: info@creative-biomart.com Fax: 1-631-938-8127

45-1 Ramsey Road, Shirley, NY 11967, USA