

Recombinant Human ADI1 Protein, GST-tagged

Cat. No. ADI1-357H **Lot. No.** (See product label)

SPECIFICATION

Product Overview	Human ADI1 full-length ORF (NP_060739.1, 1 a.a. - 179 a.a.) recombinant protein with GST-tag at N-terminal.
Species	Human
Source	Wheat Germ
Description	This gene encodes an enzyme that belongs to the aci-reductone dioxygenase family of metal-binding enzymes, which are involved in methionine salvage. This enzyme may regulate mRNA processing in the nucleus, and may carry out different functions depending on its localization. Related pseudogenes have been defined on chromosomes 8 and 20. Alternative splicing results in multiple transcript variants encoding different isoforms. [provided by RefSeq, Apr 2015]
Molecular Mass	47.9 kDa
AA Sequence	MVLAWYMDDAPGDPRQPHRPDPGRPVGLEQLRRLGVLYWKLDADKYENDPELEKIRRERNYSWMDIITICKDKLPNYEEKIKMFYEEHLHLDDEIRYILDGSGYFDVRDKEDQWIRIFMEKGMVTLPAGIYHRFTVDEKNYTKAMRLFVGEVWTAYNRPADHFEARGQYVKFLAQTA
Applications	Enzyme-linked Immunoabsorbent Assay Western Blot (Recombinant protein) Antibody Production Protein Array

 Tel: 1-631-559-9269 1-516-512-3133

 Email: info@creative-biomart.com  Fax: 1-631-938-8127

 45-1 Ramsey Road, Shirley, NY 11967, USA

Notes	Best use within three months from the date of receipt of this protein.
Storage	Store at -80 centigrade. Aliquot to avoid repeated freezing and thawing.
Storage Buffer	50 mM Tris-HCl, 10 mM reduced Glutathione, pH=8.0 in the elution buffer.
GENE INFORMATION	
Gene Name	ADI1 acireductone dioxygenase 1 [Homo sapiens]
Official Symbol	ADI1
Synonyms	ADI1; acireductone dioxygenase 1; 1,2-dihydroxy-3-keto-5-methylthiopentene dioxygenase; APL1; ARD; FLJ10913; HMFT1638; membrane type 1 matrix metalloproteinase cytoplasmic tail binding protein 1; MTCBP 1; SIPL; submergence induced protein 2; submergence-induced protein-like factor; MT1-MMP cytoplasmic tail-binding protein-1; acireductone dioxygenase (Fe(2+)-requiring); acireductone dioxygenase (Ni(2+)-requiring); membrane-type 1 matrix metalloproteinase cytoplasmic tail binding protein-1; Fe-ARD; MTCBP1; Ni-ARD;
Gene ID	55256
mRNA Refseq	NM_018269
Protein Refseq	NP_060739
MIM	613400
UniProt ID	Q9BV57

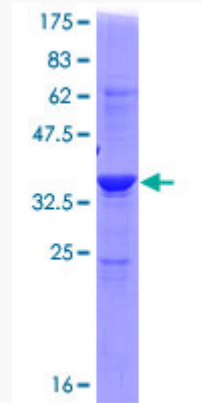
 Tel: 1-631-559-9269 1-516-512-3133

 Email: info@creative-biomart.com  Fax: 1-631-938-8127

 45-1 Ramsey Road, Shirley, NY 11967, USA

Quality Control

Testing:



12.5% SDS-PAGE Stained with Coomassie Blue.

 Tel: 1-631-559-9269 1-516-512-3133

 Email: info@creative-biomart.com  Fax: 1-631-938-8127

 45-1 Ramsey Road, Shirley, NY 11967, USA