

Recombinant Human ADM Protein, His-tagged

Cat. No. ADM-233H **Lot. No.** (See product label)

SPECIFICATION

Product Overview	Recombinant Human ADM protein(Ala22~Gly147), fused with N-terminal His tag, was expressed in E. coli.
Species	Human
Source	E.coli
ProteinLength	Ala22~Gly147
Tag	N-His
Form	Liquid in sterile PBS, pH7.4, 0.1% SKL.
Molecular Mass	The protein has a calculated MW of 16 kDa.
Endotoxin	<1.0EU per 1µg (determined by the LAL method).
Purity	> 90 % as determined by SDS-PAGE.
Storage	Store it under sterile conditions at -80°C. It is recommended that the protein be aliquoted for optimal storage. Avoid repeated freeze-thaw cycles.
Concentration	0.94 mg/ml. Centrifuge the vial at 4°C before opening to recover the entire contents.
Reconstitution	It is recommended that sterile water be added to the vial to prepare a stock solution of

 Tel: 1-631-559-9269 1-516-512-3133

 Email: info@creative-biomart.com  Fax: 1-631-938-8127

 45-1 Ramsey Road, Shirley, NY 11967, USA

0.2 ug/ul. Centrifuge the vial at 4°C before opening to recover the entire contents.

AA Sequence

MGHHHHHSGSEFARLDVASEFRKKWNKWALSRGKRELRMSSSYPTGLADVKAG
PAQTLIRPQDMKGASRSPEDSSPDAARIRVKRYRQSMNMFQGLRSFGCRFGTCTV
QKLAHQIYQFTDKDKDNVAPRSKISPQGYG

GENE INFORMATION

Gene Name ADM adrenomedullin [Homo sapiens]

Official Symbol ADM

Synonyms ADM; adrenomedullin; AM; preproadrenomedullin;

Gene ID 133

mRNA Refseq NM_001124

Protein Refseq NP_001115

MIM 103275

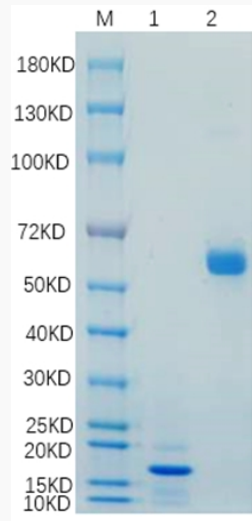
UniProt ID P35318

 Tel: 1-631-559-9269 1-516-512-3133

 Email: info@creative-biomart.com  Fax: 1-631-938-8127

 45-1 Ramsey Road, Shirley, NY 11967, USA

SDS-PAGE



Lane 1: ADM-233H; Lane 2: BSA

 Tel: 1-631-559-9269 1-516-512-3133

 Email: info@creative-biomart.com  Fax: 1-631-938-8127

 45-1 Ramsey Road, Shirley, NY 11967, USA