

Recombinant Human ADM Protein, His&SUMO-tagged

Cat. No. ADM-85H **Lot. No.** (See product label)

SPECIFICATION

Product Overview	Recombinant Human ADM Protein (Tyr95-Tyr146) with N-His&SUMO tag was expressed in E. coli.
Species	Human
Source	E.coli
ProteinLength	Tyr95-Tyr146
Description	The protein encoded by this gene is a preprohormone which is cleaved to form two biologically active peptides, adrenomedullin and proadrenomedullin N-terminal 20 peptide. Adrenomedullin is a 52 aa peptide with several functions, including vasodilation, regulation of hormone secretion, promotion of angiogenesis, and antimicrobial activity. The antimicrobial activity is antibacterial, as the peptide has been shown to kill E. coli and S. aureus at low concentration.
Form	Freeze-dried powder
Molecular Mass	Predicted Molecular Mass: 18.7 kDa Accurate Molecular Mass: \
Purity	> 90%
Applications	Positive Control; Immunogen; SDS-PAGE; WB.

 Tel: 1-631-559-9269 1-516-512-3133

 Email: info@creative-biomart.com  Fax: 1-631-938-8127

 45-1 Ramsey Road, Shirley, NY 11967, USA

Stability	The thermal stability is described by the loss rate. The loss rate was determined by accelerated thermal degradation test, that is, incubate the protein at 37 centigrade for 48h, and no obvious degradation and precipitation were observed. The loss rate is less than 5% within the expiration date under appropriate storage condition.
Storage	Avoid repeated freeze/thaw cycles. Store at 2-8 centigrade for one month. Aliquot and store at -80 centigrade for 12 months.
Storage Buffer	20mM Tris, 150mM NaCl, pH8.0, containing 1mM EDTA, 1mM DTT, 0.01% SKL, 5% Trehalose and Proclin300.
Reconstitution	Reconstitute in sterile water to a concentration of 0.1-1.0 mg/mL. Do not vortex.

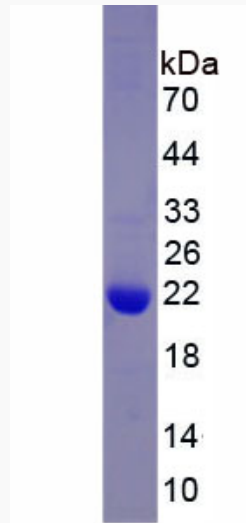
GENE INFORMATION

Gene Name	ADM adrenomedullin [Homo sapiens (human)]
Official Symbol	ADM
Synonyms	ADM; adrenomedullin; AM; preproadrenomedullin
Gene ID	133
mRNA Refseq	NM_001124
Protein Refseq	NP_001115
MIM	103275
UniProt ID	P35318

 Tel: 1-631-559-9269 1-516-512-3133

 Email: info@creative-biomart.com  Fax: 1-631-938-8127

 45-1 Ramsey Road, Shirley, NY 11967, USA



Tel: 1-631-559-9269 1-516-512-3133

Email: info@creative-biomart.com Fax: 1-631-938-8127

45-1 Ramsey Road, Shirley, NY 11967, USA