

Recombinant Human ADM2 Protein, His-tagged

Cat. No. ADM2-86H Lot. No. (See product label)

SPECIFICATION

Product Overview	Recombinant Human ADM2 Protein (Thr101-Tyr147) with N-His tag was expressed in E. coli.
Species	Human
Source	E.coli
ProteinLength	Thr101-Tyr147
Description	This gene encodes a member of the calcitonin gene-related peptide (CGRP)/calcitonin family of hormones that play a role in the regulation of cardiovascular homeostasis, prolactin release, anti-diuresis, anti-natriuresis, and regulation of food and water intake. The encoded protein is proteolytically processed to generate one or more biologically active peptides.
Form	Freeze-dried powder
Molecular Mass	Predicted Molecular Mass: 8.7 kDa Accurate Molecular Mass: 13 kDa
Purity	> 90%
Applications	Positive Control; Immunogen; SDS-PAGE; WB.
Stability	The thermal stability is described by the loss rate. The loss rate was determined by

 Tel: 1-631-559-9269 1-516-512-3133

 Email: info@creative-biomart.com  Fax: 1-631-938-8127

 45-1 Ramsey Road, Shirley, NY 11967, USA



accelerated thermal degradation test, that is, incubate the protein at 37 centigrade for 48h, and no obvious degradation and precipitation were observed. The loss rate is less than 5% within the expiration date under appropriate storage condition.

Storage

Avoid repeated freeze/thaw cycles. Store at 2-8 centigrade for one month. Aliquot and store at -80 centigrade for 12 months.

Storage Buffer

PBS, pH7.4, containing 0.01% SKL, 1 mM DTT, 5% Trehalose and Proclin300.

Reconstitution

Reconstitute in sterile water to a concentration of 0.1-1.0 mg/mL. Do not vortex.

GENE INFORMATION

Gene Name

ADM2 adrenomedullin 2 [Homo sapiens (human)]

Official Symbol

ADM2

Synonyms

ADM2; adrenomedullin 2; AM2; dJ579N16.4; protein ADM2; intermedin

Gene ID

79924

mRNA Refseq

NM_024866

Protein Refseq

NP_079142

MIM

608682

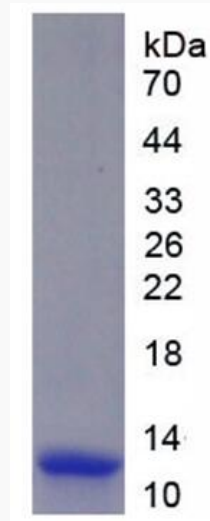
UniProt ID

Q7Z4H4

Tel: 1-631-559-9269 1-516-512-3133

Email: info@creative-biomart.com Fax: 1-631-938-8127

45-1 Ramsey Road, Shirley, NY 11967, USA



Tel: 1-631-559-9269 1-516-512-3133

Email: info@creative-biomart.com Fax: 1-631-938-8127

45-1 Ramsey Road, Shirley, NY 11967, USA