

# Recombinant Human ADO Protein, Myc/DDK-tagged, C13 and N15-labeled

**Cat. No.** ADO-866H    **Lot. No.** (See product label)

## SPECIFICATION

<b>Product Overview</b>	ADO MS Standard C13 and N15-labeled recombinant protein (NP_116193) with a C-terminal MYC/DDK tag, was expressed in HEK293 cells.
<b>Species</b>	Human
<b>Source</b>	HEK293
<b>Description</b>	Human thiol dioxygenases include cysteine dioxygenase (CDO) and cysteamine (2-aminoethanethiol) dioxygenase (ADO; EC 1.13.11.19). CDO adds 2 oxygen atoms to free cysteine, whereas ADO adds 2 oxygen atoms to free cysteamine to form hypotaurine.
<b>Molecular Mass</b>	29.9 kDa
<b>AA Sequence</b>	MPRDNMASLIQRIARQACLFRGSWGGRGASDRDAASGAEAPMQPGFPENLSKLLK SLLTQLRAEDLNIAPRKATLQPLPPNLPPVTYMHYETDGFSLGVFLLKSGTSLPLHDH PGMHGMLKVLYGTVRISCMDKLDAGGGQRPRALPPEQQFEPPLQPREREAVRPGV LRSRAEYTEASGPCILTPHRDNLHQIDAVEGPAAFDILAPPYDPDDGRDCHYYRVL EPVRPKEASSSACDLPREVWLETPQADDFWCEGEPYPGPKVFPTRTRPLEQKLIS EEDLAANDILDYKDDDDKV
<b>Purity</b>	> 80% as determined by SDS-PAGE and Coomassie blue staining
<b>Stability</b>	Stable for 3 months from receipt of products under proper storage and handling

 Tel: 1-631-559-9269    1-516-512-3133

 Email: [info@creative-biomart.com](mailto:info@creative-biomart.com)     Fax: 1-631-938-8127

 45-1 Ramsey Road, Shirley, NY 11967, USA

conditions.

**Storage** Store at -80 centigrade. Avoid repeated freeze-thaw cycles.

**Concentration** 50 µg/mL as determined by BCA

**Storage Buffer** 100 mM glycine, 25 mM Tris-HCl, pH 7.3.

## GENE INFORMATION

**Gene Name** [ADO 2-aminoethanethiol dioxygenase \[ Homo sapiens \(human\) \]](#)

**Official Symbol** [ADO](#)

**Synonyms** ADO; 2-aminoethanethiol (cysteamine) dioxygenase; C10orf22, chromosome 10 open reading frame 22; 2-aminoethanethiol dioxygenase; cysteamine dioxygenase; FLJ14547; cysteamine (2-aminoethanethiol) dioxygenase (ADO); C10orf22; DKFZp564C046;

**Gene ID** [84890](#)

**mRNA Refseq** [NM\\_032804](#)

**Protein Refseq** [NP\\_116193](#)

**MIM** [611392](#)

**UniProt ID** [Q96SZ5](#)

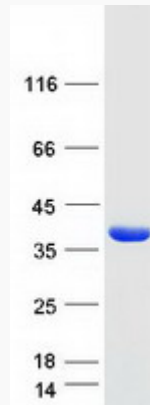
 Tel: 1-631-559-9269 1-516-512-3133

 Email: [info@creative-biomart.com](mailto:info@creative-biomart.com)  Fax: 1-631-938-8127

 45-1 Ramsey Road, Shirley, NY 11967, USA



SDS-PAGE



Tel: 1-631-559-9269 1-516-512-3133

Email: [info@creative-biomart.com](mailto:info@creative-biomart.com) Fax: 1-631-938-8127

45-1 Ramsey Road, Shirley, NY 11967, USA