

Recombinant Human ADPGK protein, GST-tagged

Cat. No. ADPGK-33H **Lot. No.** (See product label)

SPECIFICATION

| | |
|-------------------------|--|
| Product Overview | Recombinant Human ADPGK(1 a.a. - 497 a.a.) fused with GST tag at N-terminal was expressed in Wheat Germ. |
| Species | Human |
| Source | Wheat Germ |
| ProteinLength | 1-497 a.a. |
| Description | ADPGK (EC 2.7.1.147) catalyzes the ADP-dependent phosphorylation of glucose to glucose-6-phosphate and may play a role in glycolysis, possibly during ischemic conditions (Ronimus and Morgan, 2004 [PubMed 14975750]). |
| Form | 50 mM Tris-HCl, 10 mM reduced Glutathione, pH=8.0 in the elution buffer. |
| Molecular Mass | 80.5 kDa |
| AA Sequence | <p>MALWRGSAYAGFLALAVGCVFLLEPELPGSALRSLWSSLCLGPAPAPPGPVSPTEGR LAAAWDALIVRPVRRWRRVAVGVNACVDVVLVSGVKLLQALGLSPGNGKDHSILHSR NDLEEAFIHFMGKAAAERFFSDKETFHDIQVASEFPGAQHYVGGNAALIGQKFAA NSDLKVLCCGPVGPKLHELLDDNVFVPPELQEVDEFHLILEYQAGEEWGQLKAPHA NRFIFSHDLSNGAMNMLEVFVSSLEEFQPDLVVLSGLHMMEGQSKELQRKRLEVV TSISDIPTGIPVHLELASMTNRELMSSIVHQQVFPVAVTSLGLNEQELLFLTQSASGPHS SLSSWNGVPDVGVMVSDILFWILKEHGRSKSRASDLTRIHFTLVYHILATVDGHWAN QLAAVAAGARVAGTQACATETIDTSRVSLRAPQEFMTSHSEAGSRIVLNPKNPVVE</p> |

 Tel: 1-631-559-9269 1-516-512-3133

 Email: info@creative-biomart.com  Fax: 1-631-938-8127

 45-1 Ramsey Road, Shirley, NY 11967, USA

WHREGISFHFTPVLVCKDPIRTVGLGDAISAEGFLFYSEVHPHY

Applications

Enzyme-linked Immunoabsorbent Assay; Western Blot (Recombinant protein); Antibody Production; Protein Array

Notes

Best use within three months from the date of receipt of this protein.

Storage

Store at -80 centigrade. Aliquot to avoid repeated freezing and thawing.

GENE INFORMATION

Gene Name

[ADPGK ADP-dependent glucokinase \[Homo sapiens \]](#)

Official Symbol

[ADPGK](#)

Synonyms

ADPGK; ADP-dependent glucokinase; ADP GK; DKFZp434B195; rbBP-35; ATP-dependent glucokinase; ADP-GK; 2610017G09Rik;

Gene ID

[83440](#)

mRNA Refseq

[NM_031284](#)

Protein Refseq

[NP_112574](#)

MIM

[611861](#)

UniProt ID

[Q9BRR6](#)

Chromosome Location

15q24.1

Pathway

Glycolysis / Gluconeogenesis, organism-specific biosystem; Glycolysis /

 Tel: 1-631-559-9269 1-516-512-3133

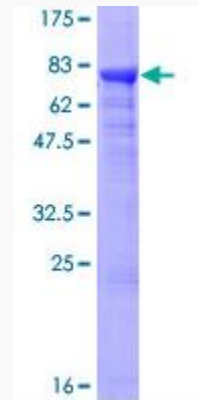
 Email: info@creative-biomart.com  Fax: 1-631-938-8127

 45-1 Ramsey Road, Shirley, NY 11967, USA

Gluconeogenesis, conserved biosystem; Metabolic pathways, organism-specific biosystem;

Function

ADP-specific glucokinase activity; metal ion binding; transferase activity;



Tel: 1-631-559-9269 1-516-512-3133

Email: info@creative-biomart.com Fax: 1-631-938-8127

45-1 Ramsey Road, Shirley, NY 11967, USA