

Recombinant Human ADPGK Protein, Myc/DDK-tagged, C13 and N15-labeled

Cat. No. ADPGK-3770H **Lot. No.** (See product label)

SPECIFICATION

Product Overview	ADPGK MS Standard C13 and N15-labeled recombinant protein (NP_112574) with a C-terminal MYC/DDK tag, was expressed in HEK293 cells.
Species	Human
Source	HEK293
Description	ADPGK (EC 2.7.1.147) catalyzes the ADP-dependent phosphorylation of glucose to glucose-6-phosphate and may play a role in glycolysis, possibly during ischemic conditions.
Molecular Mass	54.1 kDa
AA Sequence	<p>MALWRGSAYAGFLALAVGCVFLLPELPGSALRSLWSSLCLGPAPAPPGPVSPPEGR LAAAWDALIVRPVRRWRRVAVGVNACVDVVLSGVKLLQALGLSPGNGKDHSILHSR NDLEEFIFHFMGKGAERFFSDKETFDIAQVASEFPGAQHYVGGNAALIGQKFAA NSDLKVLCCGPVGPKLHELLDDNVFVPPELQEVDEFHLILEYQAGEEWGQLKAPHA NRFIFSHDLSNGAMNMLEVFVSSLEEFQPDLVVLSGLHMMEGQSKELQRKRLLVV TSISDIPTGIPVHLELASMTNRELMSSIVHQQVFPVAVTSLGLNEQELLFLTQSASGPHS SLSSWNGVPDVGMSDILFWILKEHGRSKSRASDLTRIHFTLVYHILATVDGHWAN QLAAVAAGARVAGTQACATETIDTSRVSLRAPQEFMTSHSEAGSRIVLNPKNPVE WHREGISFHFTPVLVCKDPIRTVGLGDAISAEGFLFYSEVHPHYTRTRPLEQKLISEED LAANDILDYKDDDDKV</p>

 Tel: 1-631-559-9269 1-516-512-3133

 Email: info@creative-biomart.com  Fax: 1-631-938-8127

 45-1 Ramsey Road, Shirley, NY 11967, USA

Purity	> 80% as determined by SDS-PAGE and Coomassie blue staining
Stability	Stable for 3 months from receipt of products under proper storage and handling conditions.
Storage	Store at -80 centigrade. Avoid repeated freeze-thaw cycles.
Concentration	50 µg/mL as determined by BCA
Storage Buffer	100 mM glycine, 25 mM Tris-HCl, pH 7.3.

GENE INFORMATION

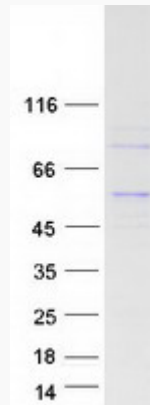
Gene Name	ADPGK ADP-dependent glucokinase [Homo sapiens (human)]
Official Symbol	ADPGK
Synonyms	ADPGK; ADP-dependent glucokinase; ADP GK; DKFZp434B195; rbBP-35; ATP-dependent glucokinase; ADP-GK; 2610017G09Rik;
Gene ID	83440
mRNA Refseq	NM_031284
Protein Refseq	NP_112574
MIM	611861
UniProt ID	Q9BRR6

 Tel: 1-631-559-9269 1-516-512-3133

 Email: info@creative-biomart.com  Fax: 1-631-938-8127

 45-1 Ramsey Road, Shirley, NY 11967, USA

SDS-PAGE



 Tel: 1-631-559-9269 1-516-512-3133

 Email: info@creative-biomart.com  Fax: 1-631-938-8127

 45-1 Ramsey Road, Shirley, NY 11967, USA