

## Recombinant Human ADPGK protein, His-tagged

Cat. No. ADPGK-5434H Lot. No. (See product label)

### SPECIFICATION

<b>Product Overview</b>	Recombinant Human ADPGK protein(362-497 aa), fused with N-terminal His tag, was expressed in E. coli.
<b>Species</b>	Mouse
<b>Source</b>	E.coli
<b>ProteinLength</b>	362-497 aa
<b>Tag</b>	N-His
<b>Form</b>	The purified protein was Lyophilized from sterile PBS (58mM Na <sub>2</sub> HPO <sub>4</sub> , 17mM NaH <sub>2</sub> PO <sub>4</sub> , 68mM NaCl, pH7.4). 5 % trehalose and 5 % mannitol are added as protectant before lyophilization.
<b>Purity</b>	85%, by SDS-PAGE with Coomassie Brilliant Blue staining.
<b>Storage</b>	Short-term storage: Store at 2-8°C for (1-2 weeks). Long-term storage: Aliquot and store at -20°C to -80°C for up to 3 months, reconstitution with sterile water and addition of an equal volume of glycerol. Avoid repeat freeze-thaw cycles.
<b>Reconstitution</b>	Reconstitute at 0.25 µg/µl in 200 µl sterile water for short-term storage. After reconstitution with sterile water, if glycerol has no effect on subsequent experiments, it is recommended to add an equal volume of glycerol for long-term storage.

 Tel: 1-631-559-9269 1-516-512-3133

 Email: [info@creative-biomart.com](mailto:info@creative-biomart.com)  Fax: 1-631-938-8127

 45-1 Ramsey Road, Shirley, NY 11967, USA

**AA Sequence** ILKEHGRSKSRASDLTRIHFHTLVYHILATVDGHWANQLAAVAAGARVAGTQACATE  
TIDTSRVSLRAPQEFMTSHSEAGSRIVLNPKNKPVVEWHREGISFHFTPVLVCKDPIRT  
VGLGDAISAEGLFYSEVHPHY

## GENE INFORMATION

**Gene Name** [ADPGK ADP-dependent glucokinase \[ Homo sapiens \]](#)

**Official Symbol** [ADPGK](#)

**Synonyms** ADPGK; ADP-dependent glucokinase; ADP GK; DKFZp434B195; rbBP-35; ATP-dependent glucokinase; ADP-GK; 2610017G09Rik;

**Gene ID** [83440](#)

**mRNA Refseq** [NM\\_031284](#)

**Protein Refseq** [NP\\_112574](#)

**MIM** [611861](#)

**UniProt ID** [Q9BRR6](#)

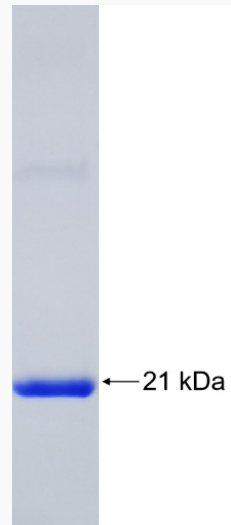
 Tel: 1-631-559-9269 1-516-512-3133

 Email: [info@creative-biomart.com](mailto:info@creative-biomart.com)  Fax: 1-631-938-8127

 45-1 Ramsey Road, Shirley, NY 11967, USA



SDS-PAGE



Tel: 1-631-559-9269 1-516-512-3133

Email: [info@creative-biomart.com](mailto:info@creative-biomart.com) Fax: 1-631-938-8127

45-1 Ramsey Road, Shirley, NY 11967, USA