

## Recombinant Human ADPRH Protein, GST-tagged

Cat. No. ADPRH-374H Lot. No. (See product label)

### SPECIFICATION

<b>Product Overview</b>	Human ADPRH full-length ORF ( NP_001116.1, 1 a.a. - 357 a.a.) recombinant protein with GST-tag at N-terminal.
<b>Species</b>	Human
<b>Source</b>	Wheat Germ
<b>Description</b>	The enzyme encoded by this gene catalyzes removal of mono-ADP-ribose from arginine residues of proteins in the ADP-ribosylation cycle. Unlike the rat and mouse enzymes that require DTT for maximal activity, the human enzyme is DTT-independent. Alternatively spliced transcript variants that encode different protein isoforms have been described. [provided by RefSeq, May 2014]
<b>Molecular Mass</b>	65.9 kDa
<b>AA Sequence</b>	MEKYVAAMVLSAAGDALGYINGKWEFLQDGEKIHRQLAQLGGLDALDVGRWRVSD DTVMHLATAEALVEAGKAPKLTQLYLLAKHYQDCMEDMDGRAPGGASVHNAMQL KPGKPNGWRIPFNSHEGGCGAAMRAMCIGLRFPHHSQLDTLIQVSIESGRMTHHHP TGYL GALASALFTAYAVNSRPPLQWGKGLMELLPEAKKYIVQSGYFVEENLQHWSY FQTKWENYLKLRGILDGESAPTFPESFGVKERDQFYTSLSYSGWGGSSGHDAPMIA YDAVLAAGDSWKELAHRAFFHGGSDSTAAIAGCWWGVMYGFKGVSPSNYEKLEY RNRLEETARALYSLGSKEDTVISL
<b>Applications</b>	Enzyme-linked Immunoabsorbent Assay Western Blot (Recombinant protein)

 Tel: 1-631-559-9269 1-516-512-3133

 Email: [info@creative-biomart.com](mailto:info@creative-biomart.com)  Fax: 1-631-938-8127

 45-1 Ramsey Road, Shirley, NY 11967, USA

	Antibody Production Protein Array
<b>Notes</b>	Best use within three months from the date of receipt of this protein.
<b>Storage</b>	Store at -80 centigrade. Aliquot to avoid repeated freezing and thawing.
<b>Storage Buffer</b>	50 mM Tris-HCl, 10 mM reduced Glutathione, pH=8.0 in the elution buffer.
<b>GENE INFORMATION</b>	
<b>Gene Name</b>	ADPRH ADP-ribosylarginine hydrolase [ Homo sapiens ]
<b>Official Symbol</b>	ADPRH
<b>Synonyms</b>	ADPRH; ADP-ribosylarginine hydrolase; [Protein ADP-ribosylarginine] hydrolase; ARH1; ADP-ribose-L-arginine cleaving enzyme;
<b>Gene ID</b>	141
<b>mRNA Refseq</b>	NM_001125
<b>Protein Refseq</b>	NP_001116
<b>MIM</b>	603081
<b>UniProt ID</b>	P54922

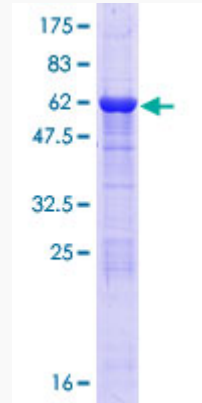
 Tel: 1-631-559-9269 1-516-512-3133

 Email: [info@creative-biomart.com](mailto:info@creative-biomart.com)  Fax: 1-631-938-8127

 45-1 Ramsey Road, Shirley, NY 11967, USA

**Quality Control**

**Testing:**



12.5% SDS-PAGE Stained with Coomassie Blue.

 Tel: 1-631-559-9269 1-516-512-3133

 Email: [info@creative-biomart.com](mailto:info@creative-biomart.com)  Fax: 1-631-938-8127

 45-1 Ramsey Road, Shirley, NY 11967, USA