

Recombinant Human ADPRH protein, His-tagged

Cat. No. ADPRH-5743H Lot. No. (See product label)

SPECIFICATION

Product Overview	Recombinant Human ADPRH protein(P54922)(372aa), fused with N-terminal His tag, was expressed in E. coli.
Species	Human
Source	E.coli
Protein Length	372aa(including fusion tag)
Tag	N-His
Form	20mM Tris.Cl, 50mM NaCl, 50% Glycerol, pH8.0.
Molecular Mass	41.4kDa(including fusion tag)
Storage	Store at -80°C and avoid repeated freeze-thaw cycles.
Reconstitution	It is recommended that sterile water be added to the vial to prepare a stock solution of 0.2 ug/ul. Centrifuge the vial at 4°C before opening to recover the entire contents.

GENE INFORMATION

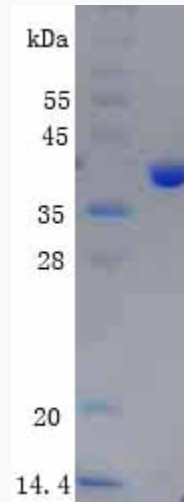
Gene Name	ADPRH ADP-ribosylarginine hydrolase [Homo sapiens]
Official Symbol	ADPRH

 Tel: 1-631-559-9269 1-516-512-3133

 Email: info@creative-biomart.com  Fax: 1-631-938-8127

 45-1 Ramsey Road, Shirley, NY 11967, USA

Synonyms	ADPRH; ADP-ribosylarginine hydrolase; [Protein ADP-ribosylarginine] hydrolase; ARH1; ADP-ribose-L-arginine cleaving enzyme;
Gene ID	141
mRNA Refseq	NM_001125
Protein Refseq	NP_001116
MIM	603081
UniProt ID	P54922

SDS-PAGE

 Tel: 1-631-559-9269 1-516-512-3133

 Email: info@creative-biomart.com  Fax: 1-631-938-8127

 45-1 Ramsey Road, Shirley, NY 11967, USA