

Recombinant Human ADPRM Protein, Myc/DDK-tagged, C13 and N15-labeled

Cat. No. ADPRM-3066H **Lot. No.** (See product label)

SPECIFICATION

Product Overview	C17orf48 MS Standard C13 and N15-labeled recombinant protein (NP_064618) with a C-terminal MYC/DDK tag, was expressed in HEK293 cells.
Species	Human
Source	HEK293
Description	Hydrolyzes ADP-ribose, IDP-ribose, CDP-glycerol, CDP-choline and CDP-ethanolamine, but not other non-reducing ADP-sugars or CDP-glucose. May be involved in immune cell signaling as suggested by the second-messenger role of ADP-ribose, which activates TRPM2 as a mediator of oxidative/nitrosative stress.
Molecular Mass	39.3 kDa
AA Sequence	MDDKPNPEALSDSSERLFSFGVIADVQFADLEDGFNFQGTTRRRYYRHSLLHLQGAIE DWNNESSMPCCVLQLGDIIDGYNAQYNASKKSLELVMDMFKRLKVPVHHTWGNHE FYNFSREYLTHSKLNTKFLEDQIVHHPETMPSEYYAYHFVFPKFRFILLDAYDLSV LGVDQSSPKYEQCMKILREHNPNTLNSPQGLSEPQFVQFNGGFSQEQLNLWLNEV LTFSDTNQEKVVIVSHLPIYDASDNVCLAWNYRDALAVIWSHECVVCFAGHTHDG GYSEDPFGVYHVNLGVIETAPDSQAFGTVHVYPDKMMLKGRGRVPDRIMNYKKE RAFHCTRTRPLEQKLISEEDLAANDILDYKDDDDKV
Purity	> 80% as determined by SDS-PAGE and Coomassie blue staining

 Tel: 1-631-559-9269 1-516-512-3133

 Email: info@creative-biomart.com  Fax: 1-631-938-8127

 45-1 Ramsey Road, Shirley, NY 11967, USA

Stability	Stable for 3 months from receipt of products under proper storage and handling conditions.
Storage	Store at -80 centigrade. Avoid repeated freeze-thaw cycles.
Concentration	50 µg/mL as determined by BCA
Storage Buffer	100 mM glycine, 25 mM Tris-HCl, pH 7.3.

GENE INFORMATION

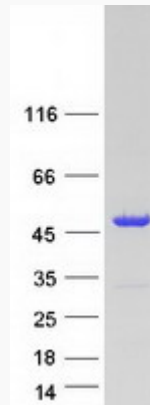
Gene Name	ADPRM ADP-ribose/CDP-alcohol diphosphatase, manganese dependent [Homo sapiens (human)]
Official Symbol	ADPRM
Synonyms	ADPRM; ADP-ribose/CDP-alcohol diphosphatase, manganese dependent; MDS006; C17orf48; NBLA03831; manganese-dependent ADP-ribose/CDP-alcohol diphosphatase; ADP-ribose/CDP-alcohol pyrophosphatase; ADPRibase-Mn; CDP-choline phosphohydrolase; EC 3.6.1.13; EC 3.6.1.16; EC 3.6.1.53
Gene ID	56985
mRNA Refseq	NM_020233
Protein Refseq	NP_064618
UniProt ID	Q3LIE5

 Tel: 1-631-559-9269 1-516-512-3133

 Email: info@creative-biomart.com  Fax: 1-631-938-8127

 45-1 Ramsey Road, Shirley, NY 11967, USA

SDS-PAGE



 Tel: 1-631-559-9269 1-516-512-3133

 Email: info@creative-biomart.com  Fax: 1-631-938-8127

 45-1 Ramsey Road, Shirley, NY 11967, USA