

Recombinant Human ADRB2(G16R,E27Q) Full Length Transmembrane protein, His-SUMO-tagged

Cat. No. ADRB2-2352H Lot. No. (See product label)

SPECIFICATION

Product Overview

Recombinant Human ADRB2(G16R,E27Q) protein(P07550)(1-413aa(G16R&E27Q)), fused to N-terminal His-SUMO tag, was expressed in E. coli.

Species

Human

Source

E.coli

ProteinLength

1-413aa(G16R,E27Q)

Form

If the delivery form is liquid, the default storage buffer is Tris/PBS-based buffer, 5%-50% glycerol.
If the delivery form is lyophilized powder, the buffer before lyophilization is Tris/PBS-based buffer, 6% Trehalose, pH 8.0.

Molecular Mass

62.5kDa

AA Sequence

MGQPGNGSAFLLAPNRSHAPDHDVTQQRDEVWVVGMGIVMSLIVLAIVFGNVLVITA
IAKFERLQVTVTNYFITSLACADLVMGLAVVPGAHAHILMKMWTFGNFWCEFWTSIDV
LCVTASIELTCVIAVDRYFAITSPFKYQSLLTKNKARVIILMVWIVSGLTSFLPIQMHWY
RATHQEAINCYANETCCDFFTNQAYAIASSIVSFYVPLVIMVFVYSRVFQEAQRQLQK
IDKSEGRFHVQNLNSQVEQDGRGTGHGLRRSSKFCLKEHKALKTLGIIMGTFTLCWLFPF
FIVNIVHVIQDNLIRKEVYILLNWIGYVNSGFNPLIYCRSPDFRIAFQELLCLRRSSLKAY
GNGYSSNGNTGEQSGYHVEQEKENKLLCEDLPGTEDFVGHQGTVPSDNIDSQGRN
CSTNDSLL

 Tel: 1-631-559-9269 1-516-512-3133

 Email: info@creative-biomart.com  Fax: 1-631-938-8127

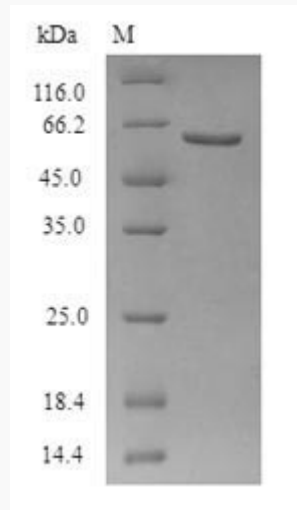
 45-1 Ramsey Road, Shirley, NY 11967, USA

Purity Greater than 90% as determined by SDS-PAGE.

Storage Store at -20°C/-80°C upon receipt, aliquoting is necessary for multiple use. Avoid repeated freeze-thaw cycles.

Reconstitution Please reconstitute protein in deionized sterile water to a concentration of 0.1-1.0 mg/mL. We recommend to add 5-50% of glycerol (final concentration) and aliquot for long-term storage at -20°C/-80°C. Our default final concentration of glycerol is 50%.

SDS-PAGE



 Tel: 1-631-559-9269 1-516-512-3133

 Email: info@creative-biomart.com  Fax: 1-631-938-8127

 45-1 Ramsey Road, Shirley, NY 11967, USA