

## Recombinant Human ADRB3 Protein, GST-tagged

Cat. No. ADRB3-382H Lot. No. (See product label)

### SPECIFICATION

<b>Product Overview</b>	Human ADRB3 full-length ORF ( NP_000016.1, 1 a.a. - 408 a.a.) recombinant protein with GST-tag at N-terminal.
<b>Species</b>	Human
<b>Source</b>	Wheat Germ
<b>Description</b>	The protein encoded by this gene belongs to the family of beta adrenergic receptors, which mediate catecholamine-induced activation of adenylate cyclase through the action of G proteins. This receptor is located mainly in the adipose tissue and is involved in the regulation of lipolysis and thermogenesis. [provided by RefSeq, Feb 2009]
<b>Molecular Mass</b>	69.9 kDa
<b>AA Sequence</b>	<pre> MAPWPHENSSLAPWPDLPNTANTSGLPGPWEAALAGALLALAVLATVGGNL LVIVAIWTPRLQMTNVFVTSLAAADLVMGLLVPPAATLALTGHWPLGATGCELW TSVDVLCVTASIELCALAVDRYLAVTNPLRYGALVTKRCARTAVVLVWVSAAVSF APIMSQWVRVGADAEQRCHSNPRCCAFASNMPYVLLSSSVSYFLPLLVMFLVYA RVFVVATRQLRLLRGELGRFPPEESPPAPSRSLAPAPVGTCAPEGVPACGRRPAR LLPLREHRALCTLGLIMGTFTLCWLPFFLANVLRALGGPSLVPGPAFLALNWLGYAN SAFNPLIYCRSPDFRSAFRRLLCRCGRRLPPEPCAAARPALFPSGVPAAARSSPAQP RLCQRDLGASWGVS </pre>
<b>Applications</b>	Enzyme-linked Immunoabsorbent Assay

 Tel: 1-631-559-9269 1-516-512-3133

 Email: [info@creative-biomart.com](mailto:info@creative-biomart.com)  Fax: 1-631-938-8127

 45-1 Ramsey Road, Shirley, NY 11967, USA

Western Blot (Recombinant protein)  
 Antibody Production  
 Protein Array

<b>Notes</b>	Best use within three months from the date of receipt of this protein.
<b>Storage</b>	Store at -80 centigrade. Aliquot to avoid repeated freezing and thawing.
<b>Storage Buffer</b>	50 mM Tris-HCl, 10 mM reduced Glutathione, pH=8.0 in the elution buffer.

## GENE INFORMATION

<b>Gene Name</b>	<a href="#">ADRB3 adrenergic, beta-3-, receptor [ Homo sapiens ]</a>
<b>Official Symbol</b>	<a href="#">ADRB3</a>
<b>Synonyms</b>	ADRB3; adrenergic, beta-3-, receptor; beta-3 adrenergic receptor; beta-3 adrenoceptor; beta-3 adrenoreceptor; BETA3AR; FLJ99960;
<b>Gene ID</b>	<a href="#">155</a>
<b>mRNA Refseq</b>	<a href="#">NM_000025</a>
<b>Protein Refseq</b>	<a href="#">NP_000016</a>
<b>MIM</b>	<a href="#">109691</a>
<b>UniProt ID</b>	<a href="#">P13945</a>

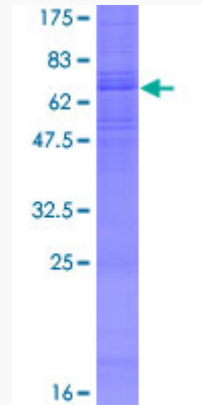
 Tel: 1-631-559-9269 1-516-512-3133

 Email: [info@creative-biomart.com](mailto:info@creative-biomart.com)  Fax: 1-631-938-8127

 45-1 Ramsey Road, Shirley, NY 11967, USA

**Quality Control**

**Testing:**



12.5% SDS-PAGE Stained with Coomassie Blue.

 Tel: 1-631-559-9269 1-516-512-3133

 Email: [info@creative-biomart.com](mailto:info@creative-biomart.com)  Fax: 1-631-938-8127

 45-1 Ramsey Road, Shirley, NY 11967, USA