

## Active Recombinant Human ADRBK2 Protein, GST-tagged

Cat. No. ADRBK2-385H Lot. No. (See product label)

### SPECIFICATION

<b>Product Overview</b>	Human ADRBK2 (CAB45657.1, 1 a.a. - 688 a.a.) full-length recombinant protein with GST tag expressed in baculovirus infected Sf21 cells.
<b>Species</b>	Human
<b>Source</b>	Insect Cells
<b>Description</b>	The beta-adrenergic receptor kinase specifically phosphorylates the agonist-occupied form of the beta-adrenergic and related G protein-coupled receptors. Overall, the beta adrenergic receptor kinase 2 has 85% amino acid similarity with beta adrenergic receptor kinase 1, with the protein kinase catalytic domain having 95% similarity. These data suggest the existence of a family of receptor kinases which may serve broadly to regulate receptor function. [provided by RefSeq, Jul 2008]
<b>Form</b>	Liquid
<b>Bio-activity</b>	The activity was determined by ELISA. The enzyme was incubated with biotinylated substrate protein, and after stopping kinase reaction by EDTA, the reaction solution was transferred into streptavidin- coated plate. Phosphorylation was detected by anti-phospho antibody and HRP-labeled anti-rabbit IgG. Substrate: Porcine tublin. ATP: 100 uM.
<b>Molecular Mass</b>	107 kDa
<b>Purity</b>	51 % by SDS-PAGE/CBB staining

 Tel: 1-631-559-9269 1-516-512-3133

 Email: [info@creative-biomart.com](mailto:info@creative-biomart.com)  Fax: 1-631-938-8127

 45-1 Ramsey Road, Shirley, NY 11967, USA

<b>Applications</b>	Functional Study SDS-PAGE
<b>Storage</b>	Store at -80 centigrade. Aliquot to avoid repeated freezing and thawing.
<b>Storage Buffer</b>	In 50 mM Tris-HCl, 150 mM NaCl, pH 7.5 (0.1% CHAPS, 1 mM DTT, 10% glycerol)

## GENE INFORMATION

<b>Gene Name</b>	ADRBK2 adrenergic, beta, receptor kinase 2 [ Homo sapiens ]
<b>Official Symbol</b>	ADRBK2
<b>Synonyms</b>	ADRBK2; adrenergic, beta, receptor kinase 2; beta-adrenergic receptor kinase 2; BARK2; GRK3; beta-ARK-2; G-protein-coupled receptor kinase 3;
<b>Gene ID</b>	157
<b>mRNA Refseq</b>	NM_005160
<b>Protein Refseq</b>	NP_005151
<b>MIM</b>	109636
<b>UniProt ID</b>	P35626

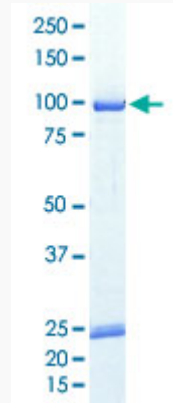
 Tel: 1-631-559-9269 1-516-512-3133

 Email: [info@creative-biomart.com](mailto:info@creative-biomart.com)  Fax: 1-631-938-8127

 45-1 Ramsey Road, Shirley, NY 11967, USA

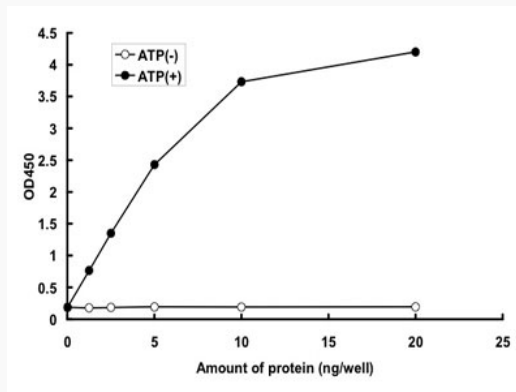
**Quality Control**

Testing:



Loading 1 ug protein in SDS-PAGE

**Result of activity analysis**



 Tel: 1-631-559-9269 1-516-512-3133

 Email: [info@creative-biomart.com](mailto:info@creative-biomart.com)  Fax: 1-631-938-8127

 45-1 Ramsey Road, Shirley, NY 11967, USA