

## Recombinant Human ADRBK2 Protein, GST-tagged

**Cat. No.** ADRBK2-387H    **Lot. No.** (See product label)

### SPECIFICATION

<b>Product Overview</b>	Human ADRBK2 partial ORF ( AAH36797, 48 a.a. - 147 a.a.) recombinant protein with GST-tag at N-terminal.
<b>Species</b>	Human
<b>Source</b>	Wheat Germ
<b>Description</b>	The beta-adrenergic receptor kinase specifically phosphorylates the agonist-occupied form of the beta-adrenergic and related G protein-coupled receptors. Overall, the beta adrenergic receptor kinase 2 has 85% amino acid similarity with beta adrenergic receptor kinase 1, with the protein kinase catalytic domain having 95% similarity. These data suggest the existence of a family of receptor kinases which may serve broadly to regulate receptor function. [provided by RefSeq, Jul 2008]
<b>Molecular Mass</b>	36.63 kDa
<b>AA Sequence</b>	AERNEITFDKIFNQKIGFLLFKDFCLNEINEAVPQVKFYEEIKEYEKLDNEEDRLCRSR QIYDAYIMKELLSCSHPFQAVEHVQSHLSKKQVTSTLFQ
<b>Applications</b>	Enzyme-linked Immunoabsorbent Assay Western Blot (Recombinant protein) Antibody Production Protein Array
<b>Notes</b>	Best use within three months from the date of receipt of this protein.

 Tel: 1-631-559-9269    1-516-512-3133

 Email: [info@creative-biomart.com](mailto:info@creative-biomart.com)     Fax: 1-631-938-8127

 45-1 Ramsey Road, Shirley, NY 11967, USA

**Storage** Store at -80 centigrade. Aliquot to avoid repeated freezing and thawing.

**Storage Buffer** 50 mM Tris-HCl, 10 mM reduced Glutathione, pH=8.0 in the elution buffer.

## GENE INFORMATION

**Gene Name** [ADRBK2 adrenergic, beta, receptor kinase 2 \[ Homo sapiens \]](#)

**Official Symbol** [ADRBK2](#)

**Synonyms** ADRBK2; adrenergic, beta, receptor kinase 2; beta-adrenergic receptor kinase 2; BARK2; GRK3; beta-ARK-2; G-protein-coupled receptor kinase 3;

**Gene ID** [157](#)

**mRNA Refseq** [NM\\_005160](#)

**Protein Refseq** [NP\\_005151](#)

**MIM** [109636](#)

**UniProt ID** [P35626](#)

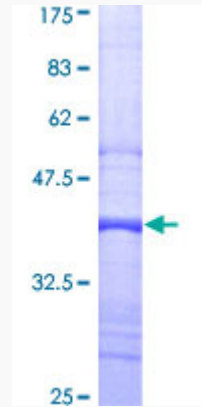
 Tel: 1-631-559-9269 1-516-512-3133

 Email: [info@creative-biomart.com](mailto:info@creative-biomart.com)  Fax: 1-631-938-8127

 45-1 Ramsey Road, Shirley, NY 11967, USA

**Quality Control**

**Testing:**



12.5% SDS-PAGE Stained with Coomassie Blue.

 Tel: 1-631-559-9269 1-516-512-3133

 Email: [info@creative-biomart.com](mailto:info@creative-biomart.com)  Fax: 1-631-938-8127

 45-1 Ramsey Road, Shirley, NY 11967, USA