

Recombinant Human Adhesion Regulating Molecule 1, His-tagged

Cat. No. ADRM1-5585H **Lot. No.** (See product label)

SPECIFICATION

Product Overview	Recombinant humanADRM1 protein, fused to His-tag at N-terminus, was expressed in E. coli and purified by using conventional chromatography.
Species	Human
Source	E.coli
Description	ADRM1 is an integral plasma membrane protein which promotes cell adhesion. ADRM1 is thought to undergo O-linked glycosylation. Expression of this gene has been shown to be induced by gamma interferon in some cancer cells.
Form	Liquid. 20mM Tris-HCl buffer (pH8.0) containing 20% glycerol, 0.1M NaCl, 1mM DTT.
Molecular Weight	44.7 kDa (431aa) confirmed by MALDI-TOF
Purity	> 90% by SDS-PAGE
Concentration	1 mg/ml (determined by Bradford assay)
Sequences of aminoacids	MGSSHHHHHH SSSLVPRGSHMGSHMTTSGALFPSLVPGSR GASNKYLVEF RAGKMSLKGT TVTPDKRKGL VYIQQTDDSL IHFCWKDRTS GNVEDDLIIFPDDCEFKRVP QCPSGRVYVL KFKAGSKRLF FWMQEPKTDQ DEEHCRKVNE YLNNPPMPGA LGASGSSGHELALGGEGGL QSLLGNMSHS QLMQLIGPAG LGGLGGLGAL TGPGLASLLG SSGPPGSSSS

 Tel: 1-631-559-9269 1-516-512-3133

 Email: info@creative-biomart.com  Fax: 1-631-938-8127

 45-1 Ramsey Road, Shirley, NY 11967, USA

SSRSQSAAVTPSSTTSSTR ATPAPSAPAA ASATSPSPAP SSGNGASTAA
 SPTQPIQLSD LQSILATMNV PAGPAGGQQVDLASVLTPEI MAPILANADV
 QERLLPYLPS GESLPQTADE IQNTLTSPQF QQALGMFSAA
 LASGQLGPLMCQFGLPAEAV EAANKGDVEA FAKAMQNNAK PEQKEGDTKD
 KKDEEEDMSL D

Storage Can bestored at +4°C short term (1-2 weeks). For long term storage, aliquot andstore at -20°C or -70°C. Avoid repeated freezing and thawing cycles.

OfficialSymbol ADRM1

nullValue_other Function Endopeptidase activator activity; proteinbinding; protease binding; proteasome binding

GENE INFORMATION

Gene Name [ADRM1 adhesion regulatingmolecule 1 \[Homo sapiens \]](#)

Synonyms ADRM1; adhesionregulating molecule 1; ARM1; GP110; Rpn13; OTTHUMP00000031471;proteasomalubiquitin receptor ADRM1; ARM-1; hRpn13; M(r) 110,000 surface antigen; adhesion-regulatingmolecule 1; regulatory particle non-ATPase 13; 110 kDa cell membraneglycoprotein; proteasome regulatory particle non-ATPase 13; Gp110; Rpn13homolog

Gene ID [11047](#)

mRNA Refseq [NM_175573](#)

Protein Refseq [NP_783163](#)

MIM [610650](#)

 Tel: 1-631-559-9269 1-516-512-3133

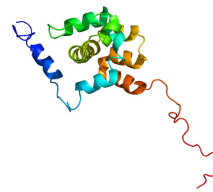
 Email: info@creative-biomart.com  Fax: 1-631-938-8127

 45-1 Ramsey Road, Shirley, NY 11967, USA

UniProt ID	Q16186
-------------------	--------

Chromosome Location	20q13.33
----------------------------	----------

Rendering based
onPDB 2KQZ.



 Tel: 1-631-559-9269 1-516-512-3133

 Email: info@creative-biomart.com  Fax: 1-631-938-8127

 45-1 Ramsey Road, Shirley, NY 11967, USA