

Recombinant Human ADSS Protein, GST-tagged

Cat. No. ADSS-390H **Lot. No.** (See product label)

SPECIFICATION

Product Overview	Human ADSS full-length ORF (AAH12356, 1 a.a. - 456 a.a.) recombinant protein with GST-tag at N-terminal.
Species	Human
Source	Wheat Germ
Description	This gene encodes the enzyme adenylosuccinate synthetase which catalyzes the first committed step in the conversion of inosine monophosphate to adenosine monophosphate. A pseudogene of this gene is found on chromosome 17.[provided by RefSeq, Nov 2010]
Molecular Mass	75.9 kDa
AA Sequence	MAFAETYPAASSLPNGDCGRPRARPGGNRVTVVLGAQWGDEGKGGKVVDLLAQDA DIVCRCQGGNNAGHTVVVDSVEYDFHLLPSGIINPNVTA FVGNGVVIHLPLGFEEAE KNVQKGGKLEGWEKRLIISDRAHIVDFHFQAADGIQEQQRQEAGKNLGTTKKGIGP VYSSKAARSGLRMCDLVSDFDGFSERFKVLANQYKSIYPTLEIDIEGELQKLKGYME KIKPMVRDGVVFLYEALHGPPKILVEGANAAALLDIDFGTYPFVTSSNCTVGGVCTGL GMPPQNVGEVYGVVKAYTTRVGIGAFPTEQDNEIGELLQTRGREFGVTTGRKRRC GWLDLVLLKYAHMINGFTALALTKLDILDMFTEIKVGVAYKLDGEIIPHIPANQEVLNKV EVQYKTLPGWNTDISNARAFKELPVNAQNYVRFIEDELQIPVKWIGVVGKSRESMIQLF
Applications	Enzyme-linked Immunoabsorbent Assay Western Blot (Recombinant protein)

 Tel: 1-631-559-9269 1-516-512-3133

 Email: info@creative-biomart.com  Fax: 1-631-938-8127

 45-1 Ramsey Road, Shirley, NY 11967, USA

Antibody Production
Protein Array

Notes	Best use within three months from the date of receipt of this protein.
Storage	Store at -80 centigrade. Aliquot to avoid repeated freezing and thawing.
Storage Buffer	50 mM Tris-HCl, 10 mM reduced Glutathione, pH=8.0 in the elution buffer.

GENE INFORMATION

Gene Name	ADSS adenylosuccinate synthase [Homo sapiens]
Official Symbol	ADSS
Synonyms	ADEH; ADSS 2
Gene ID	159
mRNA Refseq	NM_001126.3
Protein Refseq	NP_001117.2
MIM	103060
UniProt ID	P30520

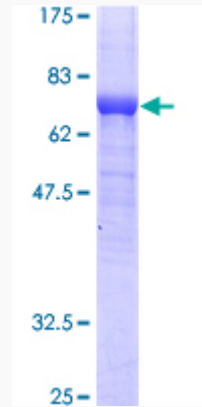
 Tel: 1-631-559-9269 1-516-512-3133

 Email: info@creative-biomart.com  Fax: 1-631-938-8127

 45-1 Ramsey Road, Shirley, NY 11967, USA

Quality Control

Testing:



12.5% SDS-PAGE Stained with Coomassie Blue.

 Tel: 1-631-559-9269 1-516-512-3133

 Email: info@creative-biomart.com  Fax: 1-631-938-8127

 45-1 Ramsey Road, Shirley, NY 11967, USA