

Recombinant Human AEBP2 Protein, GST-tagged

Cat. No. AEBP1-394H Lot. No. (See product label)

SPECIFICATION

Product Overview	Human AEBP1 partial ORF (NP_001120, 912 a.a. - 1013 a.a.) recombinant protein with GST-tag at N-terminal.
Species	Human
Source	Wheat Germ
Description	This gene encodes a member of carboxypeptidase A protein family. The encoded protein may function as a transcriptional repressor and play a role in adipogenesis and smooth muscle cell differentiation. Studies in mice suggest that this gene functions in wound healing and abdominal wall development. Overexpression of this gene is associated with glioblastoma. [provided by RefSeq, May 2013]
Molecular Mass	36.96 kDa
AA Sequence	VTDEQGIPIANATISVSGINHGVKTASGGDYWRILNPGEYRVTAHAEGYTPSAKTCN VDYDIGATQCNFILARSNWKRIREIMAMNGNRPIPHIDPSRPMTP
Applications	Enzyme-linked Immunoabsorbent Assay Western Blot (Recombinant protein) Antibody Production Protein Array
Notes	Best use within three months from the date of receipt of this protein.

 Tel: 1-631-559-9269 1-516-512-3133

 Email: info@creative-biomart.com  Fax: 1-631-938-8127

 45-1 Ramsey Road, Shirley, NY 11967, USA

Storage Store at -80centigrade. Aliquot to avoid repeated freezing and thawing.

Storage Buffer 50 mM Tris-HCl, 10 mM reduced Glutathione, pH=8.0 in the elution buffer.

GENE INFORMATION

Gene Name AEBP1 AE binding protein 1 [Homo sapiens]

Official Symbol AEBP1

Synonyms AEBP1; AE binding protein 1; adipocyte enhancer-binding protein 1; ACLP; adipocyte enhancer binding protein 1; aortic carboxypeptidase like protein; AE-binding protein 1; aortic carboxypeptidase-like protein; FLJ33612;

Gene ID 165

mRNA Refseq NM_001129

Protein Refseq NP_001120

MIM 602981

UniProt ID Q8IUX7

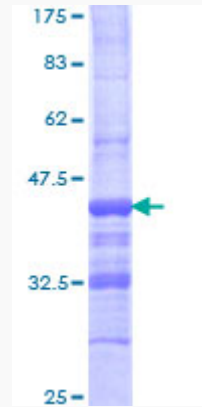
 Tel: 1-631-559-9269 1-516-512-3133

 Email: info@creative-biomart.com  Fax: 1-631-938-8127

 45-1 Ramsey Road, Shirley, NY 11967, USA

Quality Control

Testing:



12.5% SDS-PAGE Stained with Coomassie Blue.

 Tel: 1-631-559-9269 1-516-512-3133

 Email: info@creative-biomart.com  Fax: 1-631-938-8127

 45-1 Ramsey Road, Shirley, NY 11967, USA