

Recombinant Human AES Protein, Myc/DDK-tagged, C13 and N15-labeled

Cat. No. AES-1497H **Lot. No.** (See product label)

SPECIFICATION

Product Overview	AES MS Standard C13 and N15-labeled recombinant protein (NP_001121) with a C-terminal MYC/DDK tag, was expressed in HEK293 cells.
Species	Human
Source	HEK293
Description	The protein encoded by this gene is similar in sequence to the amino terminus of Drosophila enhancer of split groucho, a protein involved in neurogenesis during embryonic development. The encoded protein, which belongs to the groucho/TLE family of proteins, can function as a homooligomer or as a heterooligimer with other family members to dominantly repress the expression of other family member genes. Three transcript variants encoding different isoforms have been found for this gene.
Molecular Mass	21.8 kDa
AA Sequence	MMFPQSRHSGSSHLPQQLKFTTSDSCDRIKDEFQLLQAQYHSLKLECDKLASEKSE MQRHYVMYYEMSYGLNIEMHKQAEIVKRLNGICAQVLPYLSQEHQQQVLGAIERAK QVTAPELNSIIRQQLQAHQLSQLQALALPLTPLVGLQPPSLPAVSAGTGLLSLSALG SQAHLKEDKNGHDGDTHQEDDGEKSDTRTRPLEQKLISEEDLAANDILDYKDDDD KV
Purity	> 80% as determined by SDS-PAGE and Coomassie blue staining

 Tel: 1-631-559-9269 1-516-512-3133

 Email: info@creative-biomart.com  Fax: 1-631-938-8127

 45-1 Ramsey Road, Shirley, NY 11967, USA

Stability	Stable for 3 months from receipt of products under proper storage and handling conditions.
Storage	Store at -80 centigrade. Avoid repeated freeze-thaw cycles.
Concentration	50 µg/mL as determined by BCA
Storage Buffer	100 mM glycine, 25 mM Tris-HCl, pH 7.3.

GENE INFORMATION

Gene Name	AES amino-terminal enhancer of split [Homo sapiens (human)]
Official Symbol	AES
Synonyms	AES; amino-terminal enhancer of split; GRG5; TLE5; gp130-associated protein GAM; GRG; ESP1; AES-1; AES-2;
Gene ID	166
mRNA Refseq	NM_001130
Protein Refseq	NP_001121
MIM	600188
UniProt ID	Q08117

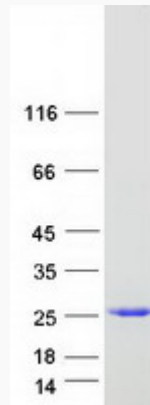
 Tel: 1-631-559-9269 1-516-512-3133

 Email: info@creative-biomart.com  Fax: 1-631-938-8127

 45-1 Ramsey Road, Shirley, NY 11967, USA



SDS-PAGE



Tel: 1-631-559-9269 1-516-512-3133

Email: info@creative-biomart.com Fax: 1-631-938-8127

45-1 Ramsey Road, Shirley, NY 11967, USA