

Recombinant Human AES Protein, GST-tagged

Cat. No. AES-397H Lot. No. (See product label)

SPECIFICATION

Product Overview	Human AES full-length ORF (NP_945320.1, 1 a.a. - 264 a.a.) recombinant protein with GST-tag at N-terminal.
Species	Human
Source	Wheat Germ
Description	The protein encoded by this gene is similar in sequence to the amino terminus of Drosophila enhancer of split groucho, a protein involved in neurogenesis during embryonic development. The encoded protein, which belongs to the groucho/TLE family of proteins, can function as a homooligomer or as a heterooligomer with other family members to dominantly repress the expression of other family member genes. Three transcript variants encoding different isoforms have been found for this gene. [provided by RefSeq, Jul 2008]
Molecular Mass	55.5 kDa
AA Sequence	MCHKNGFPQEGGITA AFLQKRKLR LSKNHRPARAKVTEHVRGTRPGRATAGPAAST RAAGSLFFDRWGNRGPAGCRGSSHLPQQLKFTTSDSCDRIKDEFQLLQAQYHSLKL ECDKLASEKSEMQRHYVMYYEMSYGLNIEMHKQAEIVKRLNGICAQVLPYLSQEHQ QQVLGAIERAKQVTAPELNSIIRQQLQAHQLSQLQALALPLTPLVGLQPPSLPAVSA GTGLLSLSALGSQAHL SKEDKNGHGDGDTHQEDDGEKSD
Applications	Enzyme-linked Immunoabsorbent Assay Western Blot (Recombinant protein)

 Tel: 1-631-559-9269 1-516-512-3133

 Email: info@creative-biomart.com  Fax: 1-631-938-8127

 45-1 Ramsey Road, Shirley, NY 11967, USA

	Antibody Production Protein Array
Notes	Best use within three months from the date of receipt of this protein.
Storage	Store at -80centigrade. Aliquot to avoid repeated freezing and thawing.
Storage Buffer	50 mM Tris-HCl, 10 mM reduced Glutathione, pH=8.0 in the elution buffer.
GENE INFORMATION	
Gene Name	AES amino-terminal enhancer of split [Homo sapiens]
Official Symbol	AES
Synonyms	AES; amino-terminal enhancer of split; GRG5; TLE5; gp130-associated protein GAM; GRG; ESP1; AES-1; AES-2;
Gene ID	166
mRNA Refseq	NM_001130
Protein Refseq	NP_001121
MIM	600188
UniProt ID	Q08117

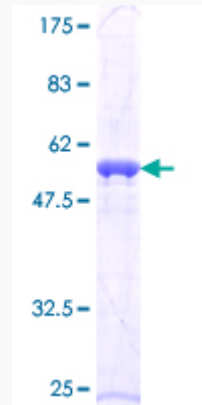
 Tel: 1-631-559-9269 1-516-512-3133

 Email: info@creative-biomart.com  Fax: 1-631-938-8127

 45-1 Ramsey Road, Shirley, NY 11967, USA

Quality Control

Testing:



12.5% SDS-PAGE Stained with Coomassie Blue.

 Tel: 1-631-559-9269 1-516-512-3133

 Email: info@creative-biomart.com  Fax: 1-631-938-8127

 45-1 Ramsey Road, Shirley, NY 11967, USA