

Recombinant Human AES Protein, GST-tagged

Cat. No. AES-398H Lot. No. (See product label)

SPECIFICATION

Product Overview	Human AES partial ORF (NP_001121, 2 a.a. - 110 a.a.) recombinant protein with GST-tag at N-terminal.
Species	Human
Source	Wheat Germ
Description	The protein encoded by this gene is similar in sequence to the amino terminus of Drosophila enhancer of split groucho, a protein involved in neurogenesis during embryonic development. The encoded protein, which belongs to the groucho/TLE family of proteins, can function as a homooligomer or as a heterooligomer with other family members to dominantly repress the expression of other family member genes. Three transcript variants encoding different isoforms have been found for this gene. [provided by RefSeq, Jul 2008]
Molecular Mass	37.73 kDa
AA Sequence	MFPQSRHSGSSHLPQQLKFTTSDSCDRIKDEFQLLQAQYHSLKLECDKLASEKSEM QRHYVMYYEMSYGLNIEMHKQAEIVKRLNGICAQVLPYLSQEHQQQVLGAIER
Applications	Enzyme-linked Immunoabsorbent Assay Western Blot (Recombinant protein) Antibody Production Protein Array

 Tel: 1-631-559-9269 1-516-512-3133

 Email: info@creative-biomart.com  Fax: 1-631-938-8127

 45-1 Ramsey Road, Shirley, NY 11967, USA

Notes	Best use within three months from the date of receipt of this protein.
Storage	Store at -80centigrade. Aliquot to avoid repeated freezing and thawing.
Storage Buffer	50 mM Tris-HCl, 10 mM reduced Glutathione, pH=8.0 in the elution buffer.

GENE INFORMATION

Gene Name	AES amino-terminal enhancer of split [Homo sapiens]
Official Symbol	AES
Synonyms	AES; amino-terminal enhancer of split; GRG5; TLE5; gp130-associated protein GAM; GRG; ESP1; AES-1; AES-2;
Gene ID	166
mRNA Refseq	NM_001130
Protein Refseq	NP_001121
MIM	600188
UniProt ID	Q08117

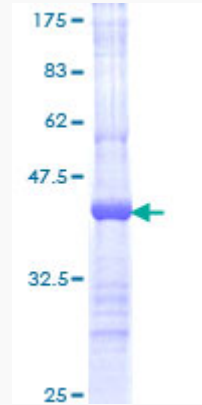
 Tel: 1-631-559-9269 1-516-512-3133

 Email: info@creative-biomart.com  Fax: 1-631-938-8127

 45-1 Ramsey Road, Shirley, NY 11967, USA

Quality Control

Testing:



12.5% SDS-PAGE Stained with Coomassie Blue.

 Tel: 1-631-559-9269 1-516-512-3133

 Email: info@creative-biomart.com  Fax: 1-631-938-8127

 45-1 Ramsey Road, Shirley, NY 11967, USA