

Recombinant Human AFAP1 protein, GST-tagged

Cat. No. AFAP1-3522H Lot. No. (See product label)

SPECIFICATION

Product Overview	Recombinant Human AFAP1 protein(382-730 aa), fused with N-terminal GST tag, was expressed in E. coli.
Species	Mouse
Source	E.coli
ProteinLength	382-730 aa
Tag	N-GST
Form	The purified protein was Lyophilized from sterile PBS (58mM Na ₂ HPO ₄ , 17mM NaH ₂ PO ₄ , 68mM NaCl, pH7.4). 5 % trehalose and 5 % mannitol are added as protectant before lyophilization.
Purity	90%, by SDS-PAGE with Coomassie Brilliant Blue staining.
Storage	Short-term storage: Store at 2-8°C for (1-2 weeks). Long-term storage: Aliquot and store at -20°C to -80°C for up to 3 months, reconstitution with sterile water and addition of an equal volume of glycerol. Avoid repeat freeze-thaw cycles.
Reconstitution	Reconstitute at 0.25 µg/µl in 200 µl sterile water for short-term storage. After reconstitution with sterile water, if glycerol has no effect on subsequent experiments, it is recommended to add an equal volume of glycerol for long-term storage.

 Tel: 1-631-559-9269 1-516-512-3133

 Email: info@creative-biomart.com  Fax: 1-631-938-8127

 45-1 Ramsey Road, Shirley, NY 11967, USA



AA Sequence

DLKTHIVSIPLRGCEVIPGLDCKHPLTFRLLRNGQEVAVLEASSSEDMGRWIGILLAET
GSSTDPEALHYDYIDVEMSASVIQTAKQTFCFMNRRVISANPYLGGTSNGYAHPSGT
ALHYDDVPCINGSLKGGKPPVASNGVTGKGKTLSSQP KKADPAAVVKRTGSNAAQY
KYGKNRVEADAKRLQTKEEELLKRKEALRNRLAQLRKERKDLRAAIEVNAGRKPQAI
LEEKLKQLEEECRQKEAERVSLELELTEVKESLKKALAGGVTLGLAIEPKSGTSSPQS
PVFRHRTLENSPISSCDTSDTEGPVPVNSAAVLKKSQAAPGSSPCRGHVLRKAKEW
ELKNGT

GENE INFORMATION

Gene Name [AFAP1 actin filament associated protein 1 \[Homo sapiens \]](#)

Official Symbol [AFAP1](#)

Synonyms AFAP1; actin filament associated protein 1; actin filament-associated protein 1; AFAP; AFAP 110; 110 kDa actin filament-associated protein; actin filament-associated protein, 110 kDa; AFAP110; AFAP-110; FLJ56849;

Gene ID [60312](#)

mRNA Refseq [NM_001134647](#)

Protein Refseq [NP_001128119](#)

MIM [608252](#)

UniProt ID [Q8N556](#)

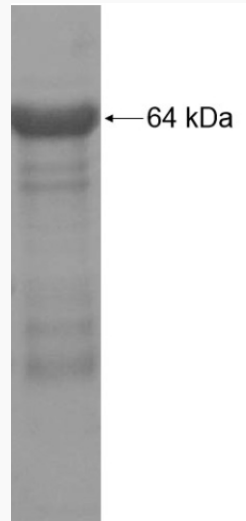
Tel: 1-631-559-9269 1-516-512-3133

Email: info@creative-biomart.com Fax: 1-631-938-8127

45-1 Ramsey Road, Shirley, NY 11967, USA



SDS-PAGE



☎ Tel: 1-631-559-9269 1-516-512-3133

☎ Email: info@creative-biomart.com ☎ Fax: 1-631-938-8127

☎ 45-1 Ramsey Road, Shirley, NY 11967, USA