

Recombinant Human AFAP1 Protein, GST-tagged

Cat. No. AFAP1-400H **Lot. No.** (See product label)

SPECIFICATION

Product Overview	Human AFAP full-length ORF (AAH32777, 1 a.a. - 730 a.a.) recombinant protein with GST-tag at N-terminal.
Species	Human
Source	Wheat Germ
Description	The protein encoded by this gene is a Src binding partner. It may represent a potential modulator of actin filament integrity in response to cellular signals, and may function as an adaptor protein by linking Src family members and/or other signaling proteins to actin filaments. Multiple transcript variants encoding different isoforms have been found for this gene. [provided by RefSeq, Aug 2008]
Molecular Mass	106.04 kDa
AA Sequence	MEELIVELRLFLELLDHEYLSTVREKKAVITNILLRIQSSKGFVDKHAQKQETANSL PAPPQMPLPEIPQPWLPPDSGPPPLPTSSLPEGYYEEAVPLSPGKAPEYITSNYDSD AMSSSYESYDEEEEDGKGKTRHQWPSEEASMDLVKDAKICAFLLRKKRFGQWTK LLCVIKDTKLLCYKSSKDQQPMELPLQGCNITYIPKDSKKKKHELKITQQGTDPLVL AVQSKEQAEQWLKVIKEAYSGCSGPVDSECPPPPSSPVHKAELEKKLSSERPSSDG EGVVENGITTCNGKEQVKRKKSSKSEAKGTVSKVTGKKITKIISLGKKKPPSTDEQTSS AEEDVPTCGYLNVLNSRWRRERWCRVKDNKLIFHKDRDLDLKHIVSIPLRGCEVIPG LDCKHPLTFRLLRNGQEVAVLEASSSEDMGRWIGILLAETGSSTDPEALHYDYIDVE MSASVIQTAKQTFCFMNRVVISANPYLGGTSNGYAHPSGTALHYDDVPCINGSLKG

 Tel: 1-631-559-9269 1-516-512-3133

 Email: info@creative-biomart.com  Fax: 1-631-938-8127

 45-1 Ramsey Road, Shirley, NY 11967, USA

KKPPVASNGVTGKGKTLSSQPKKADPAAVVKRTGSNAAQYKYGKNRVEADAKRLQ
 TKEEELLKRKEALRNRLAQLRKERKDLRAAIEVNAGRKPQAILEEKLKQLEEECRQK
 EAERVSLELELTEVKESLKKALAGGVTLGLAIEPKSGTSSPQSPVFRHRTLENSPISS
 CDTSDTEGPVPVNSAAVLKKSQAAPGSSPCRGHVLRKAKEWELKNGT

Applications	Enzyme-linked Immunoabsorbent Assay Western Blot (Recombinant protein) Antibody Production Protein Array
Notes	Best use within three months from the date of receipt of this protein.
Storage	Store at -80centigrade. Aliquot to avoid repeated freezing and thawing.
Storage Buffer	50 mM Tris-HCl, 10 mM reduced Glutathione, pH=8.0 in the elution buffer.

GENE INFORMATION

Gene Name	AFAP1 actin filament associated protein 1 [Homo sapiens]
Official Symbol	AFAP1
Synonyms	AFAP1; actin filament associated protein 1; actin filament-associated protein 1; AFAP; AFAP 110; 110 kDa actin filament-associated protein; actin filament-associated protein, 110 kDa; AFAP110; AFAP-110; FLJ56849;
Gene ID	60312
mRNA Refseq	NM_001134647
Protein Refseq	NP_001128119

 Tel: 1-631-559-9269 1-516-512-3133

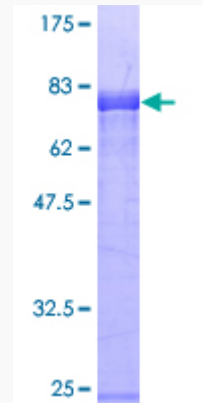
 Email: info@creative-biomart.com  Fax: 1-631-938-8127

 45-1 Ramsey Road, Shirley, NY 11967, USA


MIM 608252

UniProt ID Q8N556


**Quality Control
Testing:**



12.5% SDS-PAGE Stained with Coomassie Blue.

 Tel: 1-631-559-9269 1-516-512-3133

 Email: info@creative-biomart.com  Fax: 1-631-938-8127

 45-1 Ramsey Road, Shirley, NY 11967, USA