

Recombinant Human AFAP1L2 Protein, Myc/DDK-tagged, C13 and N15-labeled

Cat. No. AFAP1L2-2065H **Lot. No.** (See product label)

SPECIFICATION

Product Overview

AFAP1L2 MS Standard C13 and N15-labeled recombinant protein (NP_115939) with a C-terminal MYC/DDK tag, was expressed in HEK293 cells.

Species

Human

Source

HEK293

Description

May play a role in a signaling cascade by enhancing the kinase activity of SRC. Contributes to SRC-regulated transcription activation.

Molecular Mass

90.9 kDa

AA Sequence

MERYKALEQLLTELDDFLKILDQENLSSTALVKKSCLAELLRLYTKSSSSSDEEYIYMN
 KVTINKQQNAESQGKAPEEQGLLPNGEPSQHSSAPQKSLPDLPPPKMIPERKQLAIP
 KTESPEGYYEEAEPYDTSLNEDGEAVSSSYESYDEEDGSKGKSAPYQWPSPEAGIE
 LMRDARICAFLLWRKKWLGQWAKQLCVIKDNRLLCYKSSKDHSPQLDVNLLGSSVIH
 KEKQVRKKEHKLKITPMNADVIVLGLQSKDQAEQWLRVIEVSGLPSEGASEGNQY
 TPDAQRFNCQKPDIAEKYLSASEYGSSVDGHPEVPETKDVKKKCSAGLKLNLMLNL
 GRKKSTSLEPVERSLETSSYLNVLVNSQWKSRCVSRDNHLHFYQDRNRSKVAQQ
 PLSLVGCEVVPDPSPDHLYSFRILHKGEELAKLEAKSSEEMGHWLGLLSSESGSKTD
 PEEFTYDYVDADRVSCIVSAAKNSLLLMQRKFSEPNTYIDGLPSQDRQEELYDDVDL
 SELTAAVEPTEEATPVADDPNERESDRVYLDLTPVKSFLHGPSSAQAQASSPTLSCL
 DNATEALPADSGPGPTPDEPCIKCPENLGEQQLESLEPEDPSLRITTVKIQTEQQRIS

 Tel: 1-631-559-9269 1-516-512-3133

 Email: info@creative-biomart.com  Fax: 1-631-938-8127

 45-1 Ramsey Road, Shirley, NY 11967, USA

FPPSCPDAVVATPPGASPPVKDRLRVTSAEIKLGKNRTEAEVKRYTEEKERLEKKKE
 EIRGHLAQLRKEKRELKETLLKCTDKEVLASLEQKLKEIDEECRGEESSRRVDLELSIM
 EVKDNLKKAEAGPVTLGTTVDTHLENPKAVTPASAPDCTPVNSATTLKNRPLSVVV
 TGKGTVLQKAKEWKKGASTRTRPLEQKLISEEDLAANDILDYKDDDDKV

Purity > 80% as determined by SDS-PAGE and Coomassie blue staining

Stability Stable for 3 months from receipt of products under proper storage and handling conditions.

Storage Store at -80 centigrade. Avoid repeated freeze-thaw cycles.

Concentration 50 µg/mL as determined by BCA

Storage Buffer 100 mM glycine, 25 mM Tris-HCl, pH 7.3.

GENE INFORMATION

Gene Name AFAP1L2 actin filament associated protein 1 like 2 [Homo sapiens (human)]

Official Symbol AFAP1L2

Synonyms AFAP1L2; actin filament associated protein 1 like 2; XB130; KIAA1914; CTB-1144G6.4; actin filament-associated protein 1-like 2; AFAP1-like protein 2; CTB-1144G6.6

Gene ID 84632

mRNA Refseq NM_032550

Protein Refseq NP_115939

 Tel: 1-631-559-9269 1-516-512-3133

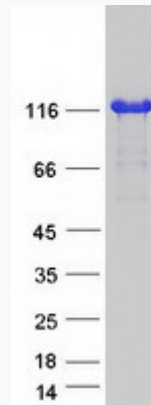
 Email: info@creative-biomart.com  Fax: 1-631-938-8127

 45-1 Ramsey Road, Shirley, NY 11967, USA

MIM 612420

UniProt ID Q8N4X5

SDS-PAGE



 Tel: 1-631-559-9269 1-516-512-3133

 Email: info@creative-biomart.com  Fax: 1-631-938-8127

 45-1 Ramsey Road, Shirley, NY 11967, USA