

Recombinant Human AFAP1L2 Protein, GST-tagged

Cat. No. AFAP1L2-404H Lot. No. (See product label)

SPECIFICATION

Product Overview	Human AFAP1L2 full-length ORF (NP_001001936.1, 1 a.a. - 818 a.a.) recombinant protein with GST-tag at N-terminal.
Species	Human
Source	Wheat Germ
Description	AFAP1L2 (Actin Filament Associated Protein 1 Like 2) is a Protein Coding gene. Among its related pathways are Cytoskeletal Signaling. GO annotations related to this gene include SH3 domain binding and protein tyrosine kinase activator activity. An important paralog of this gene is AFAP1.
Molecular Mass	117.7 kDa
AA Sequence	<p>MERYKALEQLLTELDDFLKILDQENLSSTALVKKSCLAELLRLYTKSSSSDEEYIYMN KVTINKQQNAESQGKAPEEQGLLPNGEPSQHSSAPQKSLPDLPPPKMIPERKQLAIP KTESPEGYYEEAEPYDTSLNEDGEAVSSSYESYDEEDGSKGKSAPYQWPSPEAGIE LMRDARICAFLLWRKKWLGQWAKQLCVIKDNRLCYKSSKDHSPQLDVNLLGSSVIH KEKQVRKKEHKLKITPMNADVIVLGLQSKDQAEQWLRVIQEVSGLPSEGASEGNQY TPDAQRFNCQKPDIAEKYLSASEYGSSVDGHPEVPETKDVKKKCSAGLKLSNLMNL GRKKSTSLEPVERSLETSSYLNVLVNSQWKS RWC SVRDNHLHFYQDRNRSKVAQQ PLSLVGCEVVPDPSPDHLYSFRILHKGEELAKLEAKSSEEMGHWLGLLLSESGSKTD PEEFTYDYVDADRVSCIVSAAKNSLLLMQRKFSEPNTYIDGLPSQDRQEELYDDVDL SELTAAVEPTTEATPVADDPNERESDRVYLDLTPVKSFLHGPSSAQAQASSPTLSCL</p>

 Tel: 1-631-559-9269 1-516-512-3133

 Email: info@creative-biomart.com  Fax: 1-631-938-8127

 45-1 Ramsey Road, Shirley, NY 11967, USA

DNATEALPADSGPGPTPDEPCIKCPENLGEQQLESLEPEDPSLRITTVKIQTEQQRIS
 FPPSCPDAVVATPPGASPPVKDRLRVTSAEIKLGKNRTEAEVKRYTEEKERLEKKKE
 EIRGHLAQLRKEKRELKETLLKCTDKEVLASLEQKLKEIDEECRGEESRRVDLELSIM
 EVKDNLKKAEAGPVTLGTTVDTHLENVSPRPKAVTPASAPDCTPVNSATTLKNRPL
 SVVVTGKGTVLQKAKEWKKGAS

Applications
 Enzyme-linked Immunoabsorbent Assay
 Western Blot (Recombinant protein)
 Antibody Production
 Protein Array

Notes
 Best use within three months from the date of receipt of this protein.

Storage
 Store at -80centigrade. Aliquot to avoid repeated freezing and thawing.

Storage Buffer
 50 mM Tris-HCl, 10 mM reduced Glutathione, pH=8.0 in the elution buffer.

GENE INFORMATION

Gene Name
[AFAP1L2 actin filament associated protein 1-like 2 \[Homo sapiens \]](#)

Official Symbol
[AFAP1L2](#)

Synonyms
 AFAP1L2; actin filament associated protein 1-like 2; XB130; KIAA1914

Gene ID
[84632](#)

mRNA Refseq
[NM_032550.2](#)

Protein Refseq
[NP_115939.1](#)

 Tel: 1-631-559-9269 1-516-512-3133

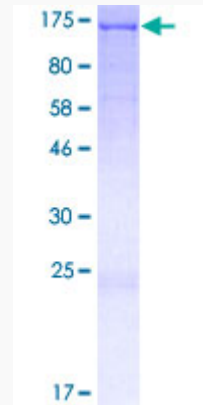
 Email: info@creative-biomart.com  Fax: 1-631-938-8127

 45-1 Ramsey Road, Shirley, NY 11967, USA

MIM 612420

UniProt ID Q8N4X5

Quality Control
Testing:



12.5% SDS-PAGE Stained with Coomassie Blue.

 Tel: 1-631-559-9269 1-516-512-3133

 Email: info@creative-biomart.com  Fax: 1-631-938-8127

 45-1 Ramsey Road, Shirley, NY 11967, USA