

Recombinant Human AFP Protein, MYC/DDK-tagged, C13 and N15-labeled

Cat. No. AFP-082H **Lot. No.** (See product label)

SPECIFICATION

Product Overview	AFP MS Standard C13 and N15-labeled recombinant protein (NP_001125) with a C-terminal MYC/DDK tag, was expressed in HEK293 cells.
Species	Human
Source	HEK293
Description	This gene encodes alpha-fetoprotein, a major plasma protein produced by the yolk sac and the liver during fetal life. Alpha-fetoprotein expression in adults is often associated with hepatocarcinoma and with teratoma, and has prognostic value for managing advanced gastric cancer. However, hereditary persistence of alpha-fetoprotein may also be found in individuals with no obvious pathology. The protein is thought to be the fetal counterpart of serum albumin, and the alpha-fetoprotein and albumin genes are present in tandem in the same transcriptional orientation on chromosome 4. Alpha-fetoprotein is found in monomeric as well as dimeric and trimeric forms, and binds copper, nickel, fatty acids and bilirubin. The level of alpha-fetoprotein in amniotic fluid is used to measure renal loss of protein to screen for spina bifida and anencephaly.
Molecular Mass	68.7 kDa
AA Sequence	MKWVESIFLIFLLNFTESRTLHRNEYGIASILDSYQCTAEISLADLATIFFAQFVQEATY KEVSKMVKDALTAIEKPTGDEQSSGLENQLPAFLEELCHEKEILEKYGHSDCCSQS

 Tel: 1-631-559-9269 1-516-512-3133

 Email: info@creative-biomart.com  Fax: 1-631-938-8127

 45-1 Ramsey Road, Shirley, NY 11967, USA



EEGRHNCFLAHKKPTPASIFLQVPEPVTSC EAYEEDRETFMKNFIYEIARRHPFLYA
 PTILLWAARYDKIIPSCCKAENAVECFQTKAATVTKELRESSLLNQHACAVMKNFGTR
 TFQAITVTKLSQKFTKVNFTIQKLVLDVAHVHEHCCRGDVLDCLQDGEKIMSYICSQ
 QDTLSNKITECCKLTTLGERGQCIIHAENDEKPEGLSPNLNRF LGDRDFNQFSSGEKNI
 FLASFVHEYSRRHPQLAVSVILRVAKGYQELLEKCFQTENPLECQDKGEEELQKYIQ
 ESQALAKRSCGLFQKLGEYYLQNAFLVAYTKKAPQLTSSSELMATR KMAATAATCCQ
 LSEDKLLACGEGAADIIIGHLCIRHEMTPVNPVGVCCTSSYANRRPCFSSLVVDETY
 VPPAFSDDKFIFHKDLCQAQGV ALQTMKQEF LINLVKQKPQITEEQLEAVIADFSGLL
 EKCCQGQEQEVCFAEEGQKLIKTR AALGVTRTRPLEQKLISEEDLAANDILDYKDD
 DDKV

Purity > 80% as determined by SDS-PAGE and Coomassie blue staining

Stability Stable for 3 months from receipt of products under proper storage and handling conditions.

Storage Store at -80 centigrade. Avoid repeated freeze-thaw cycles.

Concentration 50 µg/mL as determined by BCA

Storage Buffer 100 mM glycine, 25 mM Tris-HCl, pH 7.3.

GENE INFORMATION

Gene Name AFP alpha fetoprotein [Homo sapiens (human)]

Official Symbol AFP

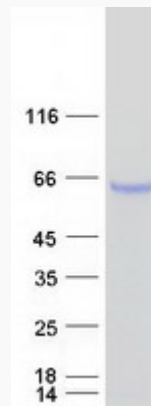
Synonyms AFP; alpha fetoprotein; AFPD; FETA; HPAFP; alpha-fetoprotein; alpha-1-fetoprotein; alpha-fetoglobulin

Tel: 1-631-559-9269 1-516-512-3133

Email: info@creative-biomart.com Fax: 1-631-938-8127

45-1 Ramsey Road, Shirley, NY 11967, USA

Gene ID	174
mRNA Refseq	NM_001134
Protein Refseq	NP_001125
MIM	104150
UniProt ID	P02771

SDS-PAGE

 Tel: 1-631-559-9269 1-516-512-3133

 Email: info@creative-biomart.com  Fax: 1-631-938-8127

 45-1 Ramsey Road, Shirley, NY 11967, USA