

Recombinant Human AFP Protein, GST-tagged

Cat. No. AFP-413H **Lot. No.** (See product label)

SPECIFICATION

Product Overview	Human AFP full-length ORF (AAH27881.1, 1 a.a. - 609 a.a.) recombinant protein with GST-tag at N-terminal.
Species	Human
Source	Wheat Germ
Description	This gene encodes alpha-fetoprotein, a major plasma protein produced by the yolk sac and the liver during fetal life. Alpha-fetoprotein expression in adults is often associated with hepatoma or teratoma. However, hereditary persistence of alpha-fetoprotein may also be found in individuals with no obvious pathology. The protein is thought to be the fetal counterpart of serum albumin, and the alpha-fetoprotein and albumin genes are present in tandem in the same transcriptional orientation on chromosome 4. Alpha-fetoprotein is found in monomeric as well as dimeric and trimeric forms, and binds copper, nickel, fatty acids and bilirubin. The level of alpha-fetoprotein in amniotic fluid is used to measure renal loss of protein to screen for spina bifida and anencephaly. [provided by RefSeq, Jul 2008]
Molecular Mass	95.1 kDa
AA Sequence	MKWVESIFLIFLLNFTESTRTLHRNEYGIASILDSYQCTAEISLADLATIFFAQFVQEATY KEVSKMVKDALTAIEKPTGDEQSSGLENQLPAFLEELCHEKEILEKYGHSDCCSQS EEGRHNCFLAHKKPTPASIFLQVPEPVTSC EAYEEDRETFMKNKFIYEIARRHPFLYA PTILLWAARYDKIIPSCCKAENAVECFQTKAATVTKELRESSLLNQHACAVMKNFGTR

 Tel: 1-631-559-9269 1-516-512-3133

 Email: info@creative-biomart.com  Fax: 1-631-938-8127

 45-1 Ramsey Road, Shirley, NY 11967, USA

TFQAITVTKLSQKFTKVNFTIEIQKLVLDVAHVHEHCCRGDVLDCLDGGEKIMSYICSQ
 QDTLSNKITECCKLTTLERGQCIIHAENDEKPEGLSPNLNRFLGDRDFNQFSSGEKNI
 FLASFVHEYSRRHPQLAVSVILRVAKGYQELLEKCFQ TENPLECQDKGEEELQKYIQ
 ESQALAKRSCGLFQKLGEYYLQNAFLVAYTKKAPQLTSSSELMATRKMATAATCCQ
 LSEDKLLACGEGAADIIIGHLCIRHEMTPVNTGVGQCCTSSYANRRPCFSSLVVDETY
 VPPAFSDDKFIFHKDLCQAQGVALQTMKQEFLINLVKQKPQITEEQLEAVIADFSGLL
 EKCCQGQEVEVCFAEEGQKLISKTRAALGV

Applications	Enzyme-linked Immunoabsorbent Assay Western Blot (Recombinant protein) Antibody Production Protein Array
Notes	Best use within three months from the date of receipt of this protein.
Storage	Store at -80centigrade. Aliquot to avoid repeated freezing and thawing.
Storage Buffer	50 mM Tris-HCl, 10 mM reduced Glutathione, pH=8.0 in the elution buffer.

GENE INFORMATION

Gene Name	AFP alpha-fetoprotein [Homo sapiens]
Official Symbol	AFP
Synonyms	AFP; alpha-fetoprotein; HPAFP; FETA; alpha-fetoglobulin; alpha-1-fetoprotein;
Gene ID	174
mRNA Refseq	NM_001134

 Tel: 1-631-559-9269 1-516-512-3133

 Email: info@creative-biomart.com  Fax: 1-631-938-8127

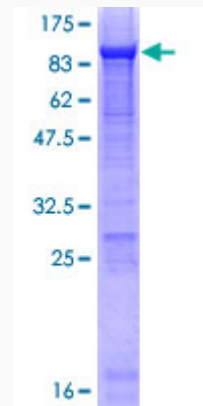
 45-1 Ramsey Road, Shirley, NY 11967, USA

Protein Refseq NP_001125

MIM 104150

UniProt ID P02771

**Quality Control
Testing:**



12.5% SDS-PAGE Stained with Coomassie Blue.

 Tel: 1-631-559-9269 1-516-512-3133

 Email: info@creative-biomart.com  Fax: 1-631-938-8127

 45-1 Ramsey Road, Shirley, NY 11967, USA