

Recombinant Full Length Human AFP Protein, C-Flag-tagged

Cat. No. AFP-488HFL **Lot. No.** (See product label)

SPECIFICATION

Product Overview	Recombinant Full Length Human AFP Protein, fused to Flag-tag at C-terminus, was expressed in Mammalian cells.
Species	Human
Source	Mammalian Cells
Description	This gene encodes alpha-fetoprotein, a major plasma protein produced by the yolk sac and the liver during fetal life. Alpha-fetoprotein expression in adults is often associated with hepatocarcinoma and with teratoma, and has prognostic value for managing advanced gastric cancer. However, hereditary persistence of alpha-fetoprotein may also be found in individuals with no obvious pathology. The protein is thought to be the fetal counterpart of serum albumin, and the alpha-fetoprotein and albumin genes are present in tandem in the same transcriptional orientation on chromosome 4. Alpha-fetoprotein is found in monomeric as well as dimeric and trimeric forms, and binds copper, nickel, fatty acids and bilirubin. The level of alpha-fetoprotein in amniotic fluid is used to measure renal loss of protein to screen for spina bifida and anencephaly.
Form	25 mM Tris HCl, pH 7.3, 100 mM glycine, 10% glycerol.
Molecular Mass	66.3 kDa
AA Sequence	MKWVESIFLIFLLNFTESRTLHRNEYGIASILDSYQCTAEISLADLATIFFAQFVQEATY KEVSKMVKDA LTAIEKPTGDEQSSGCLLENQLPAFLEELCHEKEILEKYGHSDCCSQ

 Tel: 1-631-559-9269 1-516-512-3133

 Email: info@creative-biomart.com  Fax: 1-631-938-8127

 45-1 Ramsey Road, Shirley, NY 11967, USA

SEEGRHNCFLAHKKPTPASIFLQ VPEPVTSCAEYEEDRETFMKNKFIYEIARRHPFL
 YAPTILLWAARYDKIIPSCCKAENAVECFQTKAATVT KELRESSLLNQHACAVMKNF
 GTRTFQAITVTKLSQKFTKVNFTIEIQLVLDVAHVHEHCCRGDVLDCLOD GEKIMSYI
 CSQQDTLSNKITECCKLTLERGGQCIIHAENDEKPEGLSPNLNRFLGDRDFNQFSSG
 EKNIF LASFVHEYSRRHPQLAVSVILRVAKGYQELLEKCFQTENPLECQDKGEEELQ
 KYIQESQALAKRSCGLFQ KLGEYYLQNAFLVAYTKKAPQLTSELMAITRKMAATAA
 TCCQLSEDKLLACGEGAADIIIGHLCIRHEM TPVNPVGVCCTSSYANRRPCFSSLV
 VDETYVPPAFSDDKFIFHKDLCQAQGVALQTMKQEFNLINLVKQK
 PQITEEQLEAVIADFSGLLEKCCQGQEQEVCFAEEGQKLISKTRAALGVTRTRPLEQ
 KLISEEDLAANDILDYKDDDDKV

Purity	> 80% as determined by SDS-PAGE and Coomassie blue staining.
Stability	Stable for 12 months from the date of receipt of the product under proper storage and handling conditions. Avoid repeated freeze-thaw cycles.
Storage	Store at -80 centigrade.
Concentration	>50 ug/mL as determined by microplate BCA method.
Preparation	Recombinant protein was captured through anti-DDK affinity column followed by conventional chromatography steps.
Protein Families	Druggable Genome, Secreted Protein
Full Length	Full L.

GENE INFORMATION

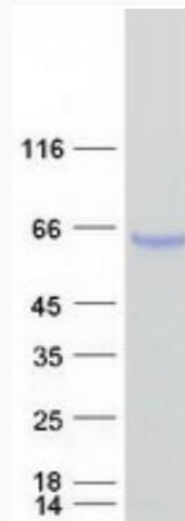
Gene Name [AFP alpha fetoprotein \[Homo sapiens \(human\) \]](#)

 Tel: 1-631-559-9269 1-516-512-3133

 Email: info@creative-biomart.com  Fax: 1-631-938-8127

 45-1 Ramsey Road, Shirley, NY 11967, USA

Official Symbol	AFP
Synonyms	AFPD; FETA; HPAFP
Gene ID	174
mRNA Refseq	NM_001134.3
Protein Refseq	NP_001125.1
MIM	104150
UniProt ID	P02771



Coomassie blue staining of purified AFP protein.

 Tel: 1-631-559-9269 1-516-512-3133

 Email: info@creative-biomart.com  Fax: 1-631-938-8127

 45-1 Ramsey Road, Shirley, NY 11967, USA