

Recombinant Human AFP Protein, His-tagged

Cat. No. AFP-52H Lot. No. (See product label)

SPECIFICATION

Product Overview Recombinant Human AFP (19-609aa) Protein with His tag at C-terminus was expressed in insect cell and purified by using conventional chromatography techniques.

Species Human

Source Insect Cells

ProteinLength 19-609

Description This gene encodes alpha-fetoprotein, a major plasma protein produced by the yolk sac and the liver during fetal life. Alpha-fetoprotein expression in adults is often associated with hepatocarcinoma and with teratoma, and has prognostic value for managing advanced gastric cancer. However, hereditary persistence of alpha-fetoprotein may also be found in individuals with no obvious pathology. The protein is thought to be the fetal counterpart of serum albumin, and the alpha-fetoprotein and albumin genes are present in tandem in the same transcriptional orientation on chromosome 4. Alpha-fetoprotein is found in monomeric as well as dimeric and trimeric forms, and binds copper, nickel, fatty acids and bilirubin. The level of alpha-fetoprotein in amniotic fluid is used to measure renal loss of protein to screen for spina bifida and anencephaly.

Form Liquid

Molecular Mass 67.5 kDa

 Tel: 1-631-559-9269 1-516-512-3133

 Email: info@creative-biomart.com  Fax: 1-631-938-8127

 45-1 Ramsey Road, Shirley, NY 11967, USA



AA Sequence

RTLHRNEYGIASILDSYQCTAEISLADLATIFFAQFVQEATYKEVSKMVKDALTAIEKP
TGDEQSSGCLLENQLPAFLEELCHEKEILEKYGHSDCCSQSEEGRHNCFLAHKKPTP
ASIPLFQVPEPVTSCAYEEDRETFMNKFIYEIARRHPFLYAPTILLWAARYDKIIPSCC
KAENAVECFQTKAATVTKELRESSLLNQHACAVMKNFGTRTFQAITVTKLSQKFTKV
NFTEIQKLVLDVAHVHEHCCRGDVLDCLQDGEKIMSYICSQQDTLSNKITECCKLTTL
ERGCIIHAENDEKPEGLSPNLNRFLGDRDFNQFSSGEKNIFLASFVHEYSRRHPQL
AVSVILRVAKGYQELLEKCFQTENPLECQDKGEEELQKYIQESQALAKRSCGLFQKL
GEYYLQNAFLVAYTKKAPQLTSSSELMAITRKMAATAATCCQLSEDKLLACGEGAADII
IGHLCIRHEMTPVNPVGVCCTSSYANRRPCFSSLVDETYVPPAFSDDKFIFHKDL
CQAQGVALQTMKQEFNLINLVKQKPQITEEQLEAVIADFSGLLEKCCQGQEQEVCFAE
EGQKLISKTRALGV

Endotoxin

<1.0 EU/µg of the protein by the LAL method.

Purity

>95% by SDS-PAGE

Applications

SDS-PAGE

Storage

Can be stored at +2 to +8 centigrade for 1 week. For long term storage, aliquot and store at -20 to -80 centigrade. Avoid repeated freezing and thawing cycles.

Concentration

0.5 mg/mL (determined by absorbance at 280nm)

Storage Buffer

Phosphate-Buffered Saline (pH 7.4) containing 10% glycerol

GENE INFORMATION

Gene Name

AFP alpha fetoprotein [Homo sapiens (human)]

Official Symbol

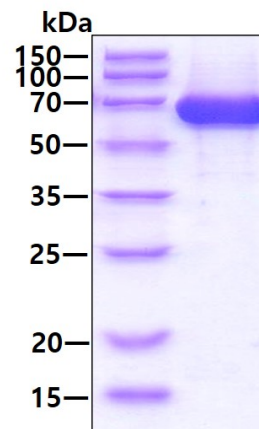
AFP

Tel: 1-631-559-9269 1-516-512-3133

Email: info@creative-biomart.com Fax: 1-631-938-8127

45-1 Ramsey Road, Shirley, NY 11967, USA

Synonyms	AFP; alpha fetoprotein; AFPD; FETA; HPAFP; alpha-fetoprotein; alpha-1-fetoprotein; alpha-fetoglobulin
Gene ID	174
mRNA Refseq	NM_001134
Protein Refseq	NP_001125
MIM	104150
UniProt ID	P02771

SDS-PAGE


3 µg by SDS-PAGE under reducing condition and visualized by coomassie blue stain.

 Tel: 1-631-559-9269 1-516-512-3133

 Email: info@creative-biomart.com  Fax: 1-631-938-8127

 45-1 Ramsey Road, Shirley, NY 11967, USA