

Recombinant Human AGA Protein (206-346 aa), His-SUMO-tagged

Cat. No. AGA-310H **Lot. No.** (See product label)

SPECIFICATION

Product Overview	Recombinant Human AGA Protein (206-346 aa) is produced by E. coli expression system. This protein is fused with a 6xHis-SUMO tag at the N-terminal. Research Area: Signal Transduction. Protein Description: Partial.
Species	Human
Source	E.coli
ProteinLength	206-346 aa
Description	Cleaves the GlcNAc-Asn bond which joins oligosaccharides to the peptide of asparagine-linked glycoproteins.
Form	Tris-based buffer, 50% glycerol
Molecular Mass	31.1 kDa
AA Sequence	TIGMVVIHKTGHIAAGTSTNGIKFKIHGRVGDSPiPGAGAYADDTAGAAAATGNGDIL MRFLPSYQAVEYMRRGEDPTIACQKVISRIQKHFPEFFGAVICANVTGSYGAAACNKL STFTQFSFMVYNSEKNQPTEEKVDCI
Purity	> 90% as determined by SDS-PAGE.
Notes	Repeated freezing and thawing is not recommended. Store working aliquots at 4

 Tel: 1-631-559-9269 1-516-512-3133

 Email: info@creative-biomart.com  Fax: 1-631-938-8127

 45-1 Ramsey Road, Shirley, NY 11967, USA



centigrade for up to one week.

Storage

The shelf life is related to many factors, storage state, buffer ingredients, storage temperature and the stability of the protein itself. Generally, the shelf life of liquid form is 6 months at -20 centigrade/-80 centigrade. The shelf life of lyophilized form is 12 months at -20 centigrade/-80 centigrade.

Concentration

A hardcopy of COA with concentration instruction is sent along with the products.

GENE INFORMATION

Gene Name

AGA aspartylglucosaminidase [Homo sapiens]

Official Symbol

AGA

Synonyms

AGA; aspartylglucosaminidase; ASRG; GA; AGU;

Gene ID

175

mRNA Refseq

NM_000027

Protein Refseq

NP_000018

MIM

613228

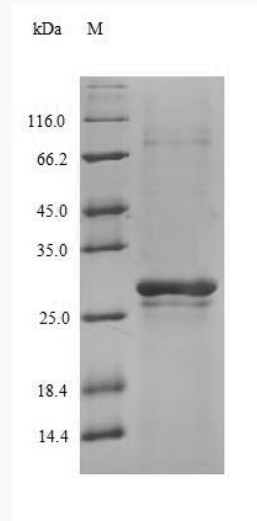
UniProt ID

P20933

Tel: 1-631-559-9269 1-516-512-3133

Email: info@creative-biomart.com Fax: 1-631-938-8127

45-1 Ramsey Road, Shirley, NY 11967, USA



(Tris-Glycine gel) Discontinuous SDS-PAGE (reduced) with 5% enrichment gel and 15% separation gel.

Tel: 1-631-559-9269 1-516-512-3133

Email: info@creative-biomart.com Fax: 1-631-938-8127

45-1 Ramsey Road, Shirley, NY 11967, USA