

Recombinant Human AGER Protein (ECD), Fc-His-tagged(C-ter)

Cat. No. AGER-05H **Lot. No.** (See product label)

SPECIFICATION

Product Overview	Recombinant Human AGER Protein (ECD) with Fc-His tag (C-ter) was expressed in HEK293.
Species	Human
Source	HEK293
ProteinLength	Gln24-Ala344
Description	The advanced glycosylation end product (AGE) receptor encoded by this gene is a member of the immunoglobulin superfamily of cell surface receptors. It is a multiligand receptor, and besides AGE, interacts with other molecules implicated in homeostasis, development, and inflammation, and certain diseases, such as diabetes and Alzheimer's disease. Many alternatively spliced transcript variants encoding different isoforms, as well as non-protein-coding variants, have been described for this gene (PMID:18089847). [provided by RefSeq, May 2011]
Form	Powder
Endotoxin	Endotoxin level is less than 0.1 EU/μg of the protein, as determined by the LAL test.
Purity	> 90% (by SDS-PAGE)
Applications	Binding, SDS-PAGE

 Tel: 1-631-559-9269 1-516-512-3133

 Email: info@creative-biomart.com  Fax: 1-631-938-8127

 45-1 Ramsey Road, Shirley, NY 11967, USA

Notes	For laboratory research only, not for drug, diagnostic or other use.
Storage	Lyophilized protein should be stored at -20°C or -80°C. After reconstitution, aliquot and store at -20°C for up to one month, at 2-8°C for up to one week. Storage in frost free freezers is not recommended. Avoid repeated freeze/thaw cycles. Suggest spin the vial prior to opening.
Storage Buffer	PBS (pH 7.4)
Reconstitution	Reconstitute to a concentration of 0.1-0.5 mg/ml in sterile distilled water.

GENE INFORMATION

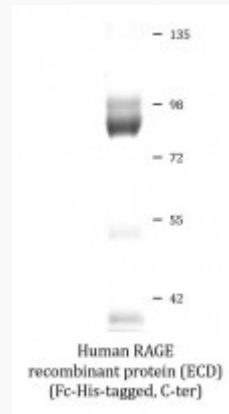
Gene Name	AGER advanced glycosylation end product-specific receptor [Homo sapiens]
Official Symbol	AGER
Synonyms	AGER; advanced glycosylation end product-specific receptor; RAGE; RAGE isoform sRAGE-delta; RAGE isoform NtRAGE-delta;
Gene ID	177
mRNA Refseq	NM_001136
Protein Refseq	NP_001127
MIM	600214
UniProt ID	Q15109

 Tel: 1-631-559-9269 1-516-512-3133

 Email: info@creative-biomart.com  Fax: 1-631-938-8127

 45-1 Ramsey Road, Shirley, NY 11967, USA

SDS-PAGE



 Tel: 1-631-559-9269 1-516-512-3133

 Email: info@creative-biomart.com  Fax: 1-631-938-8127

 45-1 Ramsey Road, Shirley, NY 11967, USA