

Recombinant Human AGGF1 Protein, GST-tagged

Cat. No. AGGF1-425H **Lot. No.** (See product label)

SPECIFICATION

Product Overview	Human AGGF1 full-length ORF (AAH02828, 1 a.a. - 109 a.a.) recombinant protein with GST-tag at N-terminal.
Species	Human
Source	Wheat Germ
Description	This gene encodes an angiogenic factor that promotes proliferation of endothelial cells. Mutations in this gene are associated with a susceptibility to Klippel-Trenaunay syndrome. Pseudogenes of this gene are found on chromosomes 3, 4, 10 and 16.[provided by RefSeq, Sep 2010]
Molecular Mass	37.73 kDa
AA Sequence	MASEAPSPPRSPPPPTSPEPELAQLRRKVEKLERELRSCKRQVREIEKLLHHTERLY QNAESNNQELRTQVRGPPQPRAPSSPGEAFFEARDSLGRGPWQGLRRTTVEYLK
Applications	Enzyme-linked Immunoabsorbent Assay Western Blot (Recombinant protein) Antibody Production Protein Array
Notes	Best use within three months from the date of receipt of this protein.
Storage	Store at -80centigrade. Aliquot to avoid repeated freezing and thawing.

 Tel: 1-631-559-9269 1-516-512-3133

 Email: info@creative-biomart.com  Fax: 1-631-938-8127

 45-1 Ramsey Road, Shirley, NY 11967, USA

Storage Buffer 50 mM Tris-HCl, 10 mM reduced Glutathione, pH=8.0 in the elution buffer.

GENE INFORMATION

Gene Name AGGF1 angiogenic factor with G patch and FHA domains 1 [Homo sapiens]

Official Symbol AGGF1

Synonyms AGGF1; angiogenic factor with G patch and FHA domains 1; FLJ10283; GPATC7; GPATCH7; HSU84971; VG5Q; angiogenic factor VG5Q; vasculogenesis gene on 5q protein; G patch domain-containing protein 7; HUS84971;

Gene ID 55109

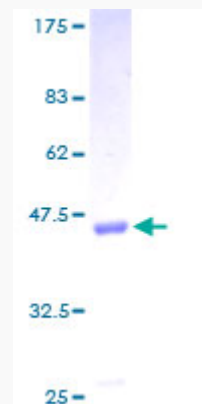
mRNA Refseq NM_018046

Protein Refseq NP_060516

MIM 608464

UniProt ID Q8N302

Quality Control Testing:



Tel: 1-631-559-9269 1-516-512-3133

Email: info@creative-biomart.com Fax: 1-631-938-8127

45-1 Ramsey Road, Shirley, NY 11967, USA



12.5% SDS-PAGE Stained with Coomassie Blue.

 Tel: 1-631-559-9269 1-516-512-3133

 Email: info@creative-biomart.com  Fax: 1-631-938-8127

 45-1 Ramsey Road, Shirley, NY 11967, USA