

Recombinant Full Length Human AGL Protein, C-Flag-tagged

Cat. No. AGL-44HFL **Lot. No.** (See product label)

SPECIFICATION

Product Overview	Recombinant Full Length Human AGL Protein, fused to Flag-tag at C-terminus, was expressed in Mammalian cells.
Species	Human
Source	Mammalian Cells
Description	This gene encodes the glycogen debrancher enzyme which is involved in glycogen degradation. This enzyme has two independent catalytic activities which occur at different sites on the protein: a 4-alpha-glucotransferase activity and a amylo-1,6-glucosidase activity. Mutations in this gene are associated with glycogen storage disease although a wide range of enzymatic and clinical variability occurs which may be due to tissue-specific alternative splicing. Alternatively spliced transcripts encoding different isoforms have been described.
Form	25 mM Tris HCl, pH 7.3, 100 mM glycine, 10% glycerol.
Molecular Mass	174.6 kDa
AA Sequence	MGHSKQIRILLNEMEKLEKTLFRLEQGYELQFRLGPTLQGKAVTVYTNYPFPGETF NREKFRSLDWENP TEREDDSKDYCKLNLQQSGSFQYYFLQGNEKSGGGYIVVDPI LRVGADNHVLPDLCVTLQTFLAKCLGPF DEWESRLRVAKESGYNMIHFTPLQTLGL SRSCYSLANQLELNPDFSRPNRKYTWNDVGLVEKLLKEWNV ICITDVVYNHTAAN SKWIQEHPECAYNLVNSPHLKPAAVLDRALWRFSCDVAEGKYKEKGIPALIENDHH MNSIRKIIWEDIFPKLKLWEFFQVDVNVKAVEQFRRLLTQENRRVTKSDPNQHLLTIQD

 Tel: 1-631-559-9269 1-516-512-3133

 Email: info@creative-biomart.com  Fax: 1-631-938-8127

 45-1 Ramsey Road, Shirley, NY 11967, USA

PEYRRFGCTVDM NIALTTFIPHDKGPAAIECCNWFHKRMEELNSEKHRLINYHQE
 QAVNCLLGNVFYERLAGHGPKLGPVT RKHPLVTRYFTFPFEEIDFSMEESMIHLPNK
 ACFLMAHNGWVMGDDPLRNFAEPGSEVYLRRELICWGDS VKLRYGNKPEDCPYL
 WAHMKKYTEITATYFQGVRLDNCHSTPLHVAEYMLDAARNLQPNLYVVAELFTGS E
 DLDNVTVTRLGISSLIREAMSAYNSHEEGRLVYRYGGPEVGSFVQPCLRPLMPAIAH
 ALFMDITHDNEC PIVHRSAYDALPSTTIVSMACCASGSTRGYDELVPHQISVSEER
 FYTKWNPEALPSNTGEVNFQSGIIA ARCAISKLHQELGAKGFIQVYVDQVDEDIVAVT
 RHSPSIHQSVVAVSRTAFRNPKTSFYKSKEVPQMCIPG KIEEVVLEARTIERNTKPYR
 KDENSINGTPDITVEIREHIQLNESKIVKQAGVATKGPNEYIQEIEFENL SPGSVIIFRV
 SLDPHAQVAVGILRNHLTQFSPHFKSGSLAVDNADPILKIPFASLASRLTLAELNQILY
 R CESEEKEDGGGCYDIPNWSALKYAGLQGLMSVLAEIRPKNDLGHFPCNNLRSGD
 WMIDYVSNRLISRSGT IAEVGKWLQAMFFYLKQIPRYLIPCYFDAILIGAYTTLLDTAW
 KQMSSFVQNGSTFVKHLSLGSVQLCGV GKFPSPILSPALMDVPYRLNEITKEKEQ
 CCVSLAAGLPHFSSGIFRCWGRDTFIALRGILLITGRYVEA RNILAFAGTLRHGLIPNL
 LGEGIYARYNCRDAVWWWLQCIQDYCKMVPNGLDILKCPVSRMYPTDDSAP LPAG
 TLDQPLFEVIQEQAMQKHMGGIQFRERNAGPQIDRNMKDEGFNITAGVDEETGFVYG
 GNRFNCGTWM DKMGESDRARNRGIPATPRDGSVEIVGLSKSAVRWLELSKKNL
 FPYHEVTVKRHGKAIKVSYDEWNRK IQDNFEKLFHVSEDPDLNEKHPNLVHKRGI
 YKDSYGASSPWCDYQLRPNFTIAMVVAPELFTTEKAWKA LEIAEKLLGPLGMKTL
 DPDDMVYCGIYDNALDNDNYNLAKGFNYHQPEWLWPIGYFLRAKLYFSRLMG
 PETTAKTIVLVKNVLSRHYVHLERSPWKGLPELTNENAQYCPFSCETQAWSIATILET
 LYDLTRTRPLEQKLISEEDLAANDILDYKDDDDKV

Purity > 80% as determined by SDS-PAGE and Coomassie blue staining.

Stability Stable for 12 months from the date of receipt of the product under proper storage and handling conditions. Avoid repeated freeze-thaw cycles.

Storage Store at -80 centigrade.

 Tel: 1-631-559-9269 1-516-512-3133

 Email: info@creative-biomart.com  Fax: 1-631-938-8127

 45-1 Ramsey Road, Shirley, NY 11967, USA

Concentration	>50 ug/mL as determined by microplate BCA method.
Preparation	Recombinant protein was captured through anti-DDK affinity column followed by conventional chromatography steps.
Protein Families	Druggable Genome
Protein Pathways	Metabolic pathways, Starch and sucrose metabolism
Full Length	Full L.

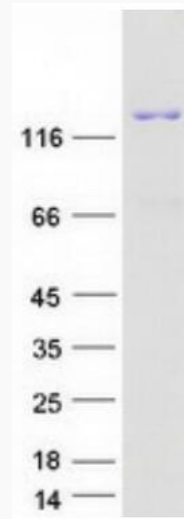
GENE INFORMATION

Gene Name	AGL amylo-alpha-1, 6-glucosidase, 4-alpha-glucanotransferase [Homo sapiens (human)]
Official Symbol	AGL
Synonyms	GDE
Gene ID	178
mRNA Refseq	NM_000642.3
Protein Refseq	NP_000633.2
MIM	610860
UniProt ID	P35573

 Tel: 1-631-559-9269 1-516-512-3133

 Email: info@creative-biomart.com  Fax: 1-631-938-8127

 45-1 Ramsey Road, Shirley, NY 11967, USA



Coomassie blue staining of purified AGL protein.

 Tel: 1-631-559-9269 1-516-512-3133

 Email: info@creative-biomart.com  Fax: 1-631-938-8127

 45-1 Ramsey Road, Shirley, NY 11967, USA