

Recombinant Full Length Human AGMAT Protein, C-Flag-tagged

Cat. No. AGMAT-2104HFL **Lot. No.** (See product label)

SPECIFICATION

Product Overview	Recombinant Full Length Human AGMAT Protein, fused to Flag-tag at C-terminus, was expressed in Mammalian cells.
Species	Human
Source	Mammalian Cells
Description	Predicted to enable agmatinase activity. Predicted to be involved in putrescine biosynthetic process from arginine, using agmatinase. Predicted to be located in mitochondrion.
Form	25 mM Tris HCl, pH 7.3, 100 mM glycine, 10% glycerol.
Molecular Mass	37.5 kDa
AA Sequence	MLRLLASGCARGPGPGVGARPAAGLFHPGRRQSRQASDAPRNQPPSPEFVARPV GVCMMRLPVQTSPEG LDAAFIVPLDTGTSNRPGARFGPRRIREESVMLRTVNPS TGALPFQSLMVADLGDVNVNLYNLQDSCRR IQEAYEKIVAAGCIPLTLGGDHTITYPI LQAMAKKHGPGVLLHVDHAHTDITDKALGEKLYHGAPFRRCVD EGLLDCKRVVQIGI RGSSTTLDPYRYNRSQGFRVLAEDCWMKSLVPLMGEVRQQMGGKPIYISFDIDAL DPAYAPGTGTPEIAGLTPSQALEIIRGCQGLNVMGCDLVEVSPPYDLSGNTALLAAN LLFEMLCALPKVT TV TRTRPLEQKLISEEDLAANDILDYKDDDDKV
Purity	> 80% as determined by SDS-PAGE and Coomassie blue staining.

 Tel: 1-631-559-9269 1-516-512-3133

 Email: info@creative-biomart.com  Fax: 1-631-938-8127

 45-1 Ramsey Road, Shirley, NY 11967, USA

Stability	Stable for 12 months from the date of receipt of the product under proper storage and handling conditions. Avoid repeated freeze-thaw cycles.
Storage	Store at -80 centigrade.
Concentration	>50 ug/mL as determined by microplate BCA method.
Preparation	Recombinant protein was captured through anti-DDK affinity column followed by conventional chromatography steps.
Protein Pathways	Arginine and proline metabolism, Metabolic pathways
Full Length	Full L.

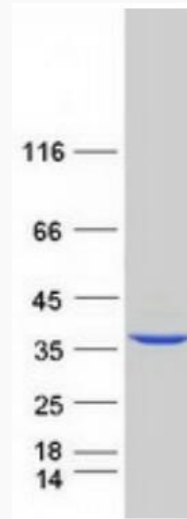
GENE INFORMATION

Gene Name	AGMAT agmatinase [Homo sapiens (human)]
Official Symbol	AGMAT
Synonyms	FLJ23384
Gene ID	79814
mRNA Refseq	NM_024758.5
Protein Refseq	NP_079034.3
MIM	617887
UniProt ID	Q9BSE5

 Tel: 1-631-559-9269 1-516-512-3133

 Email: info@creative-biomart.com  Fax: 1-631-938-8127

 45-1 Ramsey Road, Shirley, NY 11967, USA



Coomassie blue staining of purified AGMAT protein.

 Tel: 1-631-559-9269 1-516-512-3133

 Email: info@creative-biomart.com  Fax: 1-631-938-8127

 45-1 Ramsey Road, Shirley, NY 11967, USA