

## Recombinant Human AGPAT1 Protein, GST-tagged

**Cat. No.** AGPAT1-427H    **Lot. No.** (See product label)

### SPECIFICATION

<b>Product Overview</b>	Human AGPAT1 full-length ORF ( NP_006402.1, 1 a.a. - 283 a.a.) recombinant protein with GST-tag at N-terminal.
<b>Species</b>	Human
<b>Source</b>	Wheat Germ
<b>Description</b>	This gene encodes an enzyme that converts lysophosphatidic acid (LPA) into phosphatidic acid (PA). LPA and PA are two phospholipids involved in signal transduction and in lipid biosynthesis in cells. This enzyme localizes to the endoplasmic reticulum. This gene is located in the class III region of the human major histocompatibility complex. Alternative splicing results in two transcript variants encoding the same protein. [provided by RefSeq, Jul 2008]
<b>Molecular Mass</b>	58.1 kDa
<b>AA Sequence</b>	MDLWPGAWMLLLLLLFLLLLFLPTLWFCSPSAKYFFKMAFYNGWILFLAVLAIPVCAV RGRNVENMKILRLMLLHIKYLYGIRVEVRGAHHFPPSQPYVVVSNHQSSDLLGMME VLPGRVCPIAKRELLWAGSAGLACWLAGVIFIDRKRTGDAISVMSEVAQTLTQDVR VWVFPEGTRNHNGSMLPFKRGAFHLAVQAQVPIVPIVMSSYQDFYCKKERRFTSGQ CQVRVLPPVPTEGLTPDDVPALADRVRHSMLTVFREISTDGRGGGDYLLKPGGGG
<b>Applications</b>	Enzyme-linked Immunoabsorbent Assay Western Blot (Recombinant protein) Antibody Production

 Tel: 1-631-559-9269    1-516-512-3133

 Email: [info@creative-biomart.com](mailto:info@creative-biomart.com)     Fax: 1-631-938-8127

 45-1 Ramsey Road, Shirley, NY 11967, USA

	Protein Array
<b>Notes</b>	Best use within three months from the date of receipt of this protein.
<b>Storage</b>	Store at -80centigrade. Aliquot to avoid repeated freezing and thawing.
<b>Storage Buffer</b>	50 mM Tris-HCl, 10 mM reduced Glutathione, pH=8.0 in the elution buffer.
<b>GENE INFORMATION</b>	
<b>Gene Name</b>	AGPAT1 1-acylglycerol-3-phosphate O-acyltransferase 1 (lysophosphatidic acid acyltransferase, alpha) [ Homo sapiens ]
<b>Official Symbol</b>	AGPAT1
<b>Synonyms</b>	AGPAT1; 1-acylglycerol-3-phosphate O-acyltransferase 1 (lysophosphatidic acid acyltransferase, alpha); 1-acyl-sn-glycerol-3-phosphate acyltransferase alpha; LPAAT alpha; 1-AGPAT 1; 1-AGP acyltransferase 1; lysophospholipid acyltransferase; lysophosphatidic acid acyltransferase alpha; 1-acylglycerol-3-phosphate O-acyltransferase 1 (acetoacetyl Coenzyme A thiolase); G15; LPAATA; 1-AGPAT1; LPAAT-alpha; MGC4007; MGC5423;
<b>Gene ID</b>	10554
<b>mRNA Refseq</b>	NM_006411
<b>Protein Refseq</b>	NP_006402
<b>MIM</b>	603099
<b>UniProt ID</b>	Q99943

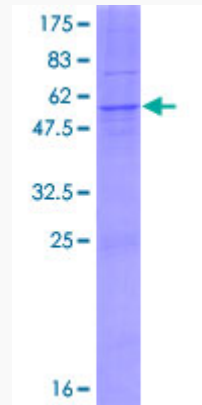
 Tel: 1-631-559-9269 1-516-512-3133

 Email: [info@creative-biomart.com](mailto:info@creative-biomart.com)  Fax: 1-631-938-8127

 45-1 Ramsey Road, Shirley, NY 11967, USA

**Quality Control**

**Testing:**



12.5% SDS-PAGE Stained with Coomassie Blue.

 Tel: 1-631-559-9269 1-516-512-3133

 Email: [info@creative-biomart.com](mailto:info@creative-biomart.com)  Fax: 1-631-938-8127

 45-1 Ramsey Road, Shirley, NY 11967, USA