

## Recombinant Human AGR2 Protein, GST-tagged

**Cat. No.** AGR2-440H    **Lot. No.** (See product label)

### SPECIFICATION

<b>Product Overview</b>	Human AGR2 partial ORF ( NP_006399, 21 a.a. - 110 a.a.) recombinant protein with GST-tag at N-terminal.
<b>Species</b>	Human
<b>Source</b>	Wheat Germ
<b>Description</b>	This gene encodes a member of the disulfide isomerase (PDI) family of endoplasmic reticulum (ER) proteins that catalyze protein folding and thiol-disulfide interchange reactions. The encoded protein has an N-terminal ER-signal sequence, a catalytically active thioredoxin domain, and a C-terminal ER-retention sequence. This protein plays a role in cell migration, cellular transformation and metastasis and is as a p53 inhibitor. As an ER-localized molecular chaperone, it plays a role in the folding, trafficking, and assembly of cysteine-rich transmembrane receptors and the cysteine-rich intestinal glycoprotein mucin. This gene has been implicated in inflammatory bowel disease and cancer progression. [provided by RefSeq, Mar 2017]
<b>Molecular Mass</b>	35.64 kDa
<b>AA Sequence</b>	RDTTVKPGAKKDTKDSRPKLPQTL SRGWGDQLIWTQTYEEALYKSKTSNKPLMIIHH LDECPHSQALKKVFAENKEIQKLAEQFVLLNLV
<b>Applications</b>	Enzyme-linked Immunoabsorbent Assay Western Blot (Recombinant protein) Antibody Production

 Tel: 1-631-559-9269    1-516-512-3133

 Email: [info@creative-biomart.com](mailto:info@creative-biomart.com)     Fax: 1-631-938-8127

 45-1 Ramsey Road, Shirley, NY 11967, USA

**Protein Array**

<b>Notes</b>	Best use within three months from the date of receipt of this protein.
<b>Storage</b>	Store at -80centigrade. Aliquot to avoid repeated freezing and thawing.
<b>Storage Buffer</b>	50 mM Tris-HCl, 10 mM reduced Glutathione, pH=8.0 in the elution buffer.

**GENE INFORMATION**

<b>Gene Name</b>	AGR2 anterior gradient 2 homolog (Xenopus laevis) [ Homo sapiens ]
<b>Official Symbol</b>	AGR2
<b>Synonyms</b>	AGR2; anterior gradient 2 homolog (Xenopus laevis); anterior gradient protein 2 homolog; AG2; HAG 2; PDIA17; protein disulfide isomerase family A; member 17; XAG 2; AG-2; HPC8; anterior gradient homolog 2; secreted cement gland homolog; secreted cement gland protein XAG-2 homolog; protein disulfide isomerase family A, member 17; GOB-4; HAG-2; XAG-2;
<b>Gene ID</b>	10551
<b>mRNA Refseq</b>	NM_006408
<b>Protein Refseq</b>	NP_006399
<b>MIM</b>	606358
<b>UniProt ID</b>	O95994

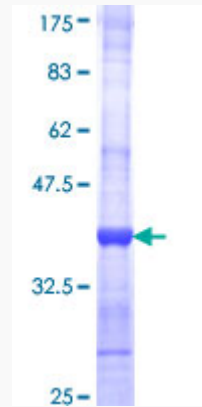
 Tel: 1-631-559-9269 1-516-512-3133

 Email: [info@creative-biomart.com](mailto:info@creative-biomart.com)  Fax: 1-631-938-8127

 45-1 Ramsey Road, Shirley, NY 11967, USA

**Quality Control**

**Testing:**



12.5% SDS-PAGE Stained with Coomassie Blue.

 Tel: 1-631-559-9269 1-516-512-3133

 Email: [info@creative-biomart.com](mailto:info@creative-biomart.com)  Fax: 1-631-938-8127

 45-1 Ramsey Road, Shirley, NY 11967, USA