

## Recombinant Human AGR3 Protein (Ile22-Leu166), C-His-tagged

Cat. No. AGR3-0027H Lot. No. (See product label)

### SPECIFICATION

<b>Product Overview</b>	Recombinant human AGR3 (Ile22-Leu166) was fused with the C-terminal His tag and was expressed in Mammalian cells.
<b>Species</b>	Human
<b>Source</b>	Mammalian Cells
<b>ProteinLength</b>	Ile22-Leu166
<b>Form</b>	Lyophilized powder/frozen liquid
<b>Molecular Mass</b>	15.95 kDa
<b>Purity</b>	>90% as determined by SDS-PAGE
<b>Notes</b>	For research use only.
<b>Storage</b>	Use a manual defrost freezer and avoid repeated freeze thaw cycles. Store at 2 to 8 centigrade for one week. Store at -20 to -80 centigrade for twelve months from the date of receipt.
<b>Storage Buffer</b>	Supplied as solution form in PBS or lyophilized from PBS.
<b>Reconstitution</b>	Reconstitute in sterile water for a stock solution.

 Tel: 1-631-559-9269 1-516-512-3133

 Email: [info@creative-biomart.com](mailto:info@creative-biomart.com)  Fax: 1-631-938-8127

 45-1 Ramsey Road, Shirley, NY 11967, USA

**Shipping** They are shipped out with dry ice/blue ice unless customers require otherwise.

## GENE INFORMATION

**Gene Name** [AGR3 anterior gradient 3 homolog \(Xenopus laevis\) \[ Homo sapiens \(human\) \]](#)

**Official Symbol** [AGR3](#)

**Synonyms** AGR3; anterior gradient 3 homolog (Xenopus laevis); anterior gradient protein 3 homolog; BCMP11; breast cancer membrane protein 11; hAG 3; HAG3; PDIA18; protein disulfide isomerase family A; member 18; AG-3; anterior gradient homolog 3; protein disulfide isomerase family A, member 18; AG3; hAG-3;

**Gene ID** [155465](#)

**mRNA Refseq** [NM\\_176813](#)

**Protein Refseq** [NP\\_789783](#)

**MIM** [609482](#)

**UniProt ID** [Q8TD06](#)

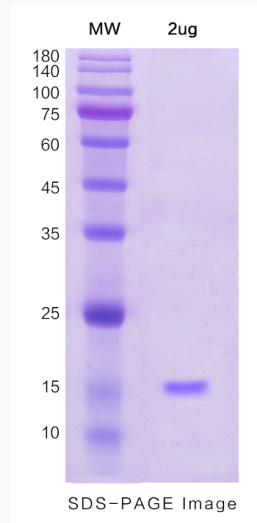
 Tel: 1-631-559-9269 1-516-512-3133

 Email: [info@creative-biomart.com](mailto:info@creative-biomart.com)  Fax: 1-631-938-8127

 45-1 Ramsey Road, Shirley, NY 11967, USA



**SDS-PAGE**



Tel: 1-631-559-9269 1-516-512-3133

Email: [info@creative-biomart.com](mailto:info@creative-biomart.com) Fax: 1-631-938-8127

45-1 Ramsey Road, Shirley, NY 11967, USA