

Recombinant Human AGTR1 Protein (297-359 aa), His-tagged

Cat. No. AGTR1-1320H Lot. No. (See product label)

SPECIFICATION

Product Overview	Recombinant Human AGTR1 Protein (297-359 aa) is produced by Yeast expression system. This protein is fused with a 6xHis tag at the N-terminal. Research Area: Cancer. Protein Description: Partial.
Species	Human
Source	Yeast
ProteinLength	297-359 aa
Description	Receptor for angiotensin II. Mediates its action by association with G proteins that activate a phosphatidylinositol-calcium second messenger syst.
Form	Tris-based buffer,50% glycerol
Molecular Mass	9.2 kDa
AA Sequence	LNPLFYGFLGKKFKRYFLQLLKYIPPKAKSHSNLSTKMSTLSYRPSDNVSSSTKKPAP CFEVE
Purity	> 90% as determined by SDS-PAGE.
Notes	Repeated freezing and thawing is not recommended. Store working aliquots at 4 centigrade for up to one week.

 Tel: 1-631-559-9269 1-516-512-3133

 Email: info@creative-biomart.com  Fax: 1-631-938-8127

 45-1 Ramsey Road, Shirley, NY 11967, USA

Storage The shelf life is related to many factors, storage state, buffer ingredients, storage temperature and the stability of the protein itself. Generally, the shelf life of liquid form is 6 months at -20 centigrade/-80 centigrade. The shelf life of lyophilized form is 12 months at -20 centigrade/-80 centigrade.

Concentration A hardcopy of COA with reconstitution instruction is sent along with the products. Please refer to it for detailed information.

GENE INFORMATION

Gene Name [AGTR1 angiotensin II receptor, type 1 \[Homo sapiens \]](#)

Official Symbol [AGTR1](#)

Synonyms [AGTR1](#); [AG2S](#); [AGTR1A](#); [AT1](#); [AT1B](#); [AT2R1](#); [AT2R1A](#); [AT2R1B](#); [HAT1R](#); [AT1AR](#); [AT1BR](#); [AT1R](#); [AGTR1B](#);

Gene ID [185](#)

mRNA Refseq [NM_000685](#)

Protein Refseq [NP_000676](#)

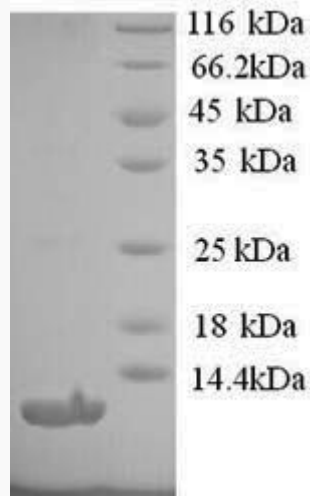
MIM [106165](#)

UniProt ID [P30556](#)

 Tel: 1-631-559-9269 1-516-512-3133

 Email: info@creative-biomart.com  Fax: 1-631-938-8127

 45-1 Ramsey Road, Shirley, NY 11967, USA



(Tris-Glycine gel) Discontinuous SDS-PAGE (reduced) with 5% enrichment gel and 15% separation gel.

 Tel: 1-631-559-9269 1-516-512-3133

 Email: info@creative-biomart.com  Fax: 1-631-938-8127

 45-1 Ramsey Road, Shirley, NY 11967, USA