

# Recombinant Human AGTRAP Full Length Transmembrane protein, His-SUMO & Myc-tagged

Cat. No. AGTRAP-2441H Lot. No. (See product label)

## SPECIFICATION

<b>Product Overview</b>	Recombinant Human AGTRAP protein(Q6RW13)(1-159aa), fused to N-terminal His-SUMO tag and C-terminal Myc tag, was expressed in E. coli.
<b>Species</b>	Human
<b>Source</b>	E.coli
<b>ProteinLength</b>	1-159aa
<b>Form</b>	If the delivery form is liquid, the default storage buffer is Tris/PBS-based buffer, 5%-50% glycerol. If the delivery form is lyophilized powder, the buffer before lyophilization is Tris/PBS-based buffer, 6% Trehalose, pH 8.0.
<b>Molecular Mass</b>	37.4 kDa
<b>AA Sequence</b>	MELPAVNLIKVILLGHWLLTTWGCIVFSGSYAWANFTILALGVWAVAQRDSIDAISMFL GGLLATIFLDIVHISIFYPRVSLTDTGRFGVGMAILLLLLKPLSCCFVYHMYRERGGEL LVHTGFLGSSQDRSAYQTIDSAEAPADPFVPEGRSQDARGY
<b>Purity</b>	Greater than 85% as determined by SDS-PAGE.
<b>Storage</b>	Store at -20°C/-80°C upon receipt, aliquoting is necessary for mutiple use. Avoid repeated freeze-thaw cycles.

 Tel: 1-631-559-9269 1-516-512-3133

 Email: [info@creative-biomart.com](mailto:info@creative-biomart.com)  Fax: 1-631-938-8127

 45-1 Ramsey Road, Shirley, NY 11967, USA

**Reconstitution**

Please reconstitute protein in deionized sterile water to a concentration of 0.1-1.0 mg/mL. We recommend to add 5-50% of glycerol (final concentration) and aliquot for long-term storage at -20°C/-80°C. Our default final concentration of glycerol is 50%.

**GENE INFORMATION****Gene Name**

AGTRAP angiotensin II receptor-associated protein [ Homo sapiens ]

**Official Symbol**

AGTRAP

**Synonyms**

AGTRAP; angiotensin II receptor-associated protein; type-1 angiotensin II receptor-associated protein; ATRAP; AT1 receptor-associated protein; ATI receptor-associated protein; angiotensin II, type I receptor-associated protein; MGC29646;

**Gene ID**

57085

**mRNA Refseq**

NM\_001040194

**Protein Refseq**

NP\_001035284

**MIM**

608729

**UniProt ID**

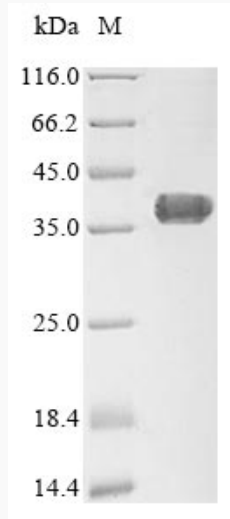
Q6RW13

 Tel: 1-631-559-9269 1-516-512-3133

 Email: [info@creative-biomart.com](mailto:info@creative-biomart.com)  Fax: 1-631-938-8127

 45-1 Ramsey Road, Shirley, NY 11967, USA

**SDS-PAGE**



 Tel: 1-631-559-9269 1-516-512-3133

 Email: [info@creative-biomart.com](mailto:info@creative-biomart.com)  Fax: 1-631-938-8127

 45-1 Ramsey Road, Shirley, NY 11967, USA