

## Recombinant Human AGXT Protein (Met1-Leu392), N-His-tagged

Cat. No. AGXT-0645H Lot. No. (See product label)

### SPECIFICATION

<b>Product Overview</b>	Recombinant human AGXT (Met1-Leu392) was fused with the N-His tag and was expressed in E. coli.
<b>Species</b>	Human
<b>Source</b>	E.coli
<b>ProteinLength</b>	Met1-Leu392
<b>Form</b>	Lyophilized powder/frozen liquid
<b>Molecular Mass</b>	45.32 kDa
<b>Purity</b>	>90% as determined by SDS-PAGE
<b>Notes</b>	For research use only.
<b>Storage</b>	Use a manual defrost freezer and avoid repeated freeze thaw cycles. Store at 2 to 8 centigrade for one week. Store at -20 to -80 centigrade for twelve months from the date of receipt.
<b>Storage Buffer</b>	0.01M PBS, pH 7.4, 0.02% NLS
<b>Reconstitution</b>	Reconstitute in sterile water for a stock solution.

 Tel: 1-631-559-9269 1-516-512-3133

 Email: [info@creative-biomart.com](mailto:info@creative-biomart.com)  Fax: 1-631-938-8127

 45-1 Ramsey Road, Shirley, NY 11967, USA

**Shipping** They are shipped out with dry ice/blue ice unless customers require otherwise.

## GENE INFORMATION

**Gene Name** [AGXT alanine-glyoxylate aminotransferase \[ Homo sapiens \(human\) \]](#)

**Official Symbol** [AGXT](#)

**Synonyms** AGXT; alanine-glyoxylate aminotransferase; SPAT; serine--pyruvate aminotransferase; AGT; AGT1; AGXT1; glycolicaciduria; L alanine: glyoxylate aminotransferase 1; oxalosis I; PH1; primary hyperoxaluria type 1; serine:pyruvate aminotransferase; SPT; serine-pyruvate aminotransferase; alanine--glyoxylate aminotransferase; L-alanine: glyoxylate aminotransferase 1; hepatic peroxisomal alanine:glyoxylate aminotransferase; TLH6;

**Gene ID** [189](#)

**mRNA Refseq** [NM\\_000030](#)

**Protein Refseq** [NP\\_000021](#)

**MIM** [604285](#)

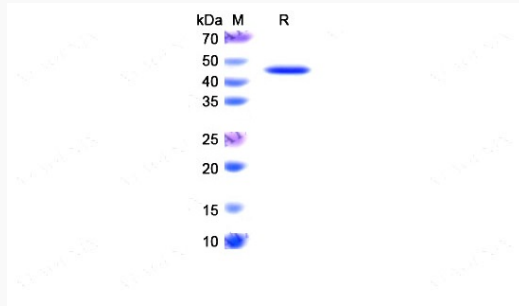
**UniProt ID** [P21549](#)

 Tel: 1-631-559-9269 1-516-512-3133

 Email: [info@creative-biomart.com](mailto:info@creative-biomart.com)  Fax: 1-631-938-8127

 45-1 Ramsey Road, Shirley, NY 11967, USA

**SDS-PAGE**



 Tel: 1-631-559-9269 1-516-512-3133

 Email: [info@creative-biomart.com](mailto:info@creative-biomart.com)  Fax: 1-631-938-8127

 45-1 Ramsey Road, Shirley, NY 11967, USA