

Recombinant Human AGXT2 Protein, GST-tagged

Cat. No. AGXT2-453H Lot. No. (See product label)

SPECIFICATION

Product Overview	Human AGXT2 partial ORF (NP_114106, 415 a.a. - 514 a.a.) recombinant protein with GST-tag at N-terminal.
Species	Human
Source	Wheat Germ
Description	<p>The protein encoded by this gene is a class III pyridoxal-phosphate-dependent mitochondrial aminotransferase. It catalyzes the conversion of glyoxylate to glycine using L-alanine as the amino donor. It is an important regulator of methylarginines and is involved in the control of blood pressure in kidney. Polymorphisms in this gene affect methylarginine and beta-aminoisobutyrate metabolism, and are associated with carotid atherosclerosis. Alternative splicing results in multiple transcript variants. [provided by RefSeq, Apr 2015]</p>
Molecular Mass	36.74 kDa
AA Sequence	LLKFAKLRDEFEIVGDVRGKGLMIGIEMVQDKISCRPLPREEVNIQHEDCKHMGLLVG RGSIFSQTFRIAPSMCITKPEVDFAVEVFRSALTQHMERRAK
Applications	Enzyme-linked Immunoabsorbent Assay Western Blot (Recombinant protein) Antibody Production Protein Array

 Tel: 1-631-559-9269 1-516-512-3133

 Email: info@creative-biomart.com  Fax: 1-631-938-8127

 45-1 Ramsey Road, Shirley, NY 11967, USA

Notes	Best use within three months from the date of receipt of this protein.
Storage	Store at -80centigrade. Aliquot to avoid repeated freezing and thawing.
Storage Buffer	50 mM Tris-HCl, 10 mM reduced Glutathione, pH=8.0 in the elution buffer.
GENE INFORMATION	
Gene Name	AGXT2 alanine--glyoxylate aminotransferase 2 [Homo sapiens]
Official Symbol	AGXT2
Synonyms	AGXT2; alanine--glyoxylate aminotransferase 2; alanine glyoxylate aminotransferase 2; alanine--glyoxylate aminotransferase 2, mitochondrial; AGT2; beta ALAAT II; beta alanine pyruvate aminotransferase; beta-ALAAT II; beta-alanine-pyruvate aminotransferase; (R)-3-amino-2-methylpropionate--pyruvate transaminase; DAIBAT;
Gene ID	64902
mRNA Refseq	NM_031900
Protein Refseq	NP_114106
MIM	612471
UniProt ID	Q9BYV1

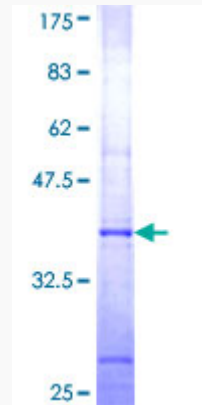
 Tel: 1-631-559-9269 1-516-512-3133

 Email: info@creative-biomart.com  Fax: 1-631-938-8127

 45-1 Ramsey Road, Shirley, NY 11967, USA

Quality Control

Testing:



12.5% SDS-PAGE Stained with Coomassie Blue.

 Tel: 1-631-559-9269 1-516-512-3133

 Email: info@creative-biomart.com  Fax: 1-631-938-8127

 45-1 Ramsey Road, Shirley, NY 11967, USA