

Recombinant Human AHDC1 Protein, GST-tagged

Cat. No. AHCYL1-457H Lot. No. (See product label)

SPECIFICATION

Product Overview	Human AHCYL1 partial ORF (NP_006612, 1 a.a. - 101 a.a.) recombinant protein with GST-tag at N-terminal.
Species	Human
Source	Wheat Germ
Description	The protein encoded by this gene interacts with inositol 1,4,5-trisphosphate receptor, type 1 and may be involved in the conversion of S-adenosyl-L-homocysteine to L-homocysteine and adenosine. Several transcript variants encoding two different isoforms have been found for this gene. [provided by RefSeq, Jun 2011]
Molecular Mass	36.85 kDa
AA Sequence	MSMPDAMPLPGVGEELKQAKEIEDAEKYSFMATVTKAPKKQIQFADDMQEFTKFPT KTGRRSLRSISQSSTDSYSSAASYTDSSDDEVSPREKQQTNSKG
Applications	Enzyme-linked Immunoabsorbent Assay Western Blot (Recombinant protein) Antibody Production Protein Array
Notes	Best use within three months from the date of receipt of this protein.
Storage	Store at -80centigrade. Aliquot to avoid repeated freezing and thawing.

 Tel: 1-631-559-9269 1-516-512-3133

 Email: info@creative-biomart.com  Fax: 1-631-938-8127

 45-1 Ramsey Road, Shirley, NY 11967, USA

Storage Buffer 50 mM Tris-HCl, 10 mM reduced Glutathione, pH=8.0 in the elution buffer.

GENE INFORMATION

Gene Name [AHCYL1 adenosylhomocysteinase-like 1 \[Homo sapiens \]](#)

Official Symbol [AHCYL1](#)

Synonyms

AHCYL1; adenosylhomocysteinase-like 1; S adenosylhomocysteine hydrolase like 1; putative adenosylhomocysteinase 2; inositol 1; 4; 5 trisphosphate receptor binding protein; IRBIT; XPVKONA; adoHcyase 2; DC-expressed AHCY-like molecule; S-adenosyl-L-homocysteine hydrolase 2; S-adenosyl homocysteine hydrolase homolog; dendritic cell expressed AHCY-like protein; S-adenosylhomocysteine hydrolase-like protein 1; inositol 1,4,5-trisphosphate receptor-binding protein; DCAL; PRO0233;

Gene ID [10768](#)

mRNA Refseq [NM_001242673](#)

Protein Refseq [NP_001229602](#)

MIM [607826](#)

UniProt ID [O43865](#)

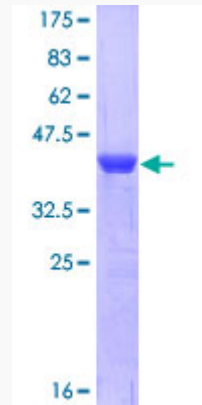
 Tel: 1-631-559-9269 1-516-512-3133

 Email: info@creative-biomart.com  Fax: 1-631-938-8127

 45-1 Ramsey Road, Shirley, NY 11967, USA

Quality Control

Testing:



12.5% SDS-PAGE Stained with Coomassie Blue.

 Tel: 1-631-559-9269 1-516-512-3133

 Email: info@creative-biomart.com  Fax: 1-631-938-8127

 45-1 Ramsey Road, Shirley, NY 11967, USA