

## Recombinant Human AHA1, activator of heat shock 90kDa protein ATPase homolog 1 (yeast)

Cat. No. AHSA1-322H Lot. No. (See product label)

### SPECIFICATION

<b>Product Overview</b>	Recombinant human AHSA1 protein was expressed in E. coli and purified by using conventional chromatography techniques (320 aa, 36.1 kDa).
<b>Species</b>	Human
<b>Source</b>	E.coli
<b>Description</b>	The co-chaperone Aha1 (Activator of HSP90 ATPase-1) binds the middle domain of Hsp90(amino acid 272-627) and is proposed to function as an ATPase-activating protein that competes with p23 and other co-chaperones for Hsp90 binding.
<b>Formulation</b>	Liquid. In 20 mM Tris-HCl buffer (pH 8.0) containing 2 mM EDTA.
<b>Molecular Weight</b>	36.1 kDa (320 aa).
<b>Purity</b>	> 95% by SDS – PAGE.
<b>Concentration</b>	1 mg/ml (determined by Bradford assay).
<b>Endotoxin Level</b>	< 1.0 EU per 1 µg of protein (determined by LAL method).
<b>Sequence</b>	MATNVNNWHW TERDASNWST DKLKTFLAV QVQNEEGKCE VTEVSKLDGE ASINNRKGGK IFFYEWSVKL NWTGTSKSGV QYKGVHVEIPN LSDENSVDEV EISVSLAKDE PDTNLVALMK EEGVKLLREA MGIYISTLKT EFTQGMILPT

 Tel: 1-631-559-9269 1-516-512-3133

 Email: [info@creative-biomart.com](mailto:info@creative-biomart.com)  Fax: 1-631-938-8127

 45-1 Ramsey Road, Shirley, NY 11967, USA

MNGESVDPVG QPALKTEERK AKPAPSKTQA RPVGVKIPTC KITLKETFLT  
 SPEELYRVFT TQELVQAFTH APATLEADRG GKFHMVDGNV SGEFTDLVPE  
 KHIVMKWRFK SWPEGHFATI TLTFIDKNGE TELCMEGRGI PAPEEERTRQ  
 GWQRYFFEGI KQTFGYGARL

**Storage**

Can be stored at +4°C short term (1-2 weeks). For long term storage, aliquot and store at -20°C or -70°C. Avoid repeated freezing and thawing cycles.

## GENE INFORMATION

**Gene Name**

AHSA1

**Synonyms**

AHSA1; AHA1, activator of heat shock 90kDa protein ATPase homolog 1 (yeast); p38; AHA1; C14orf3; chromosome 14 open reading frame 3; activator of heat shock 90kDa protein ATPase homolog 1.

**Gene ID**

10598

**mRNA Refseq**

NM\_012111.2

**Protein Refseq**

NP\_036243.1

**MIM**

608466

**UniProt ID**

O95433

**Chromosome  
Location**

14q24

**Function**

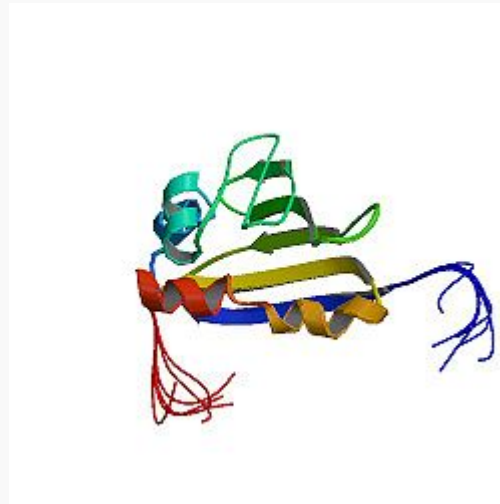
ATPase activator activity; chaperone binding.

 Tel: 1-631-559-9269 1-516-512-3133

 Email: [info@creative-biomart.com](mailto:info@creative-biomart.com)  Fax: 1-631-938-8127

 45-1 Ramsey Road, Shirley, NY 11967, USA

PDBrendering based  
on 1x53. Available  
structures: 1x53.



 Tel: 1-631-559-9269 1-516-512-3133

 Email: [info@creative-biomart.com](mailto:info@creative-biomart.com)  Fax: 1-631-938-8127

 45-1 Ramsey Road, Shirley, NY 11967, USA